

THE OFFICIAL MATCHDAY MAGAZINE OF SWINDON TOWN F.C. PRICE £1.80

# SWINDON TOWN

ISSUE NO. 24

## **NATIONWIDE REVIEW**

**16 page supplement  
inside**

## **ACTION SPECIAL**

**Pictures from  
Southend fixture  
page 16-17**

## **FREE INSIDE**

**Phil King Poster  
(Centre Pages)**

## **SPOTLIGHT ON**

**Graham Anthony  
pages 38-39**



SWINDON  
TOWN  
F.C.



**TODAY'S  
MATCHDAY  
SPONSORS**



Forward Trust

**SATURDAY APRIL 12TH 1997**  
**Swindon Town vs Ipswich Town**  
**NATIONWIDE LEAGUE DIVISION 1**  
**Kick-Off 3.00pm**



MAIN SPONSOR







## A RADICAL NEW ENGINE OIL FROM THE LIQUID ENGINEERS

- ***"Unique Molecular Attraction"***
- ***Protection from the moment  
you turn your key***



**The Liquid  
Engineers**





Swindon Town Football Club  
County Ground, County Road,  
Swindon, Wiltshire, SN1 2ED.

(01793) 430430 ADMINISTRATION  
(01793) 536170 ADMINISTRATION FAX  
(01793) 532121 MARKETING DEPARTMENT  
(01793) 423771 MARKETING FAX  
(01793) 529000 TICKET OFFICE  
(01793) 431887 TICKET OFFICE FAX  
(01793) 421303 COMMUNITY OFFICE  
(01793) 423030 CLUB SUPERSTORE

**Chairman:**  
MICHAEL SPEARMAN

**Vice Chairman:**  
PETER ARCHER

**Directors:**  
Sir SETON WILLS Bt., CLIFF PUFFETT  
PETER GODWIN C.B.E., RIKKI HUNT,  
WILLIE CARSON (ASSOCIATE)

**Director of Football:**  
RIKKI HUNT

**President:**  
C.J. GREEN

**Chief Executive:**  
STEVE JONES

**Player/Manager:**  
STEVE McMAHON

**Marketing Manager:**  
MARTIN STEVENS

**Retail Sales & Marketing Manager:**  
JULIAN WETHERALL

**First Team Coach:**  
MIKE WALSH

**Reserve Team Coach:**  
ROSS MacLAREN

**Youth Team Manager:**  
TOMMY WHEELDON

**Youth Development Officer:**  
PHIL CANNON

**Community Development Officers:**  
CLIVE MAGUIRE & JON HOLLOWAY

**Safety Officer/ Stadium Manager:**  
MIKE HUGHES

**Club Physio:**  
JONATHAN TRIGG

**Hon. Medical Officer:**  
Dr. J.D. NICHOLAS

**Matchday Magazine Editor:**  
JASON HARRIS: (01793) 532121

**Design:**  
NICK PRESCOTT  
DERRICK JOHNSON

**Produced & Printed by:**  
PIA ADVERTISING & MARKETING LTD.  
(01635) 35546

The views contained herein are not necessarily those of Swindon Town Football Club.  
No part of this programme may be reproduced without the written permission of Swindon Town F.C.

# welcome to swindon town

***Although our own hopes of reaching the end of season play-offs may have disappeared, we can still play a major part in who does finish in a top six position.***

That is certainly the case today as we entertain an Ipswich Town team who just outside the play-off zone.

Three points will keep the Portman Road side very much in the hunt for a move up to the Premiership but we are keen to finish with a flourish after a recent barren spell which has seen just one win in seven. The Blues sneaked a 3-2 win last November, taking advantage of a sluggish start by Swindon so today we attempt to prevent Ipswich from grabbing a double and at the same time dent George Burley's promotion hopes.

## A point made

***After two heavy defeats over Easter, Swindon stopped the rot with a goal-less draw at home to Ronnie Whelan's Southend United last week.***

In front of a disappointing crowd of 6,730, Steve McMahon's injury-hit side showed the battling spirit he had called for against a United team who were literally fighting for their First Division lives.

A revamped defence kept Southend at bay for most of the match with Fraser Digby only called upon to make one serious save in the whole 90 minutes. At the other end, Swindon went close several times with the woodwork denying them on three occasions.

Before the interval Darren Bullock saw a shot pushed onto the bar by Southend's man of the match goalkeeper Simon Royce. And Royce couldn't believe his good fortune when Steve Cowe's shot came back off the far post and bounced straight back into his arms.

After the break newcomer Graham Anthony went closest to breaking the dead-lock when he stormed through and fired a shot against the woodwork.

## Three games to go

***After today's fixture we have just three games to go until the end of the 1996/97 season.***

Next Saturday we pay a visit to the nearby Manor Ground to take on arch rivals Oxford United in an all ticket encounter. Then on Saturday April 26th we bring the curtain down on our home campaign when Crystal Palace are the visitors.

The Eagles look set to swoop on a play-off spot but wouldn't it be nice to complete a league double over the Londoners and leave the County Ground on a high.

Our final game of the season takes place on Sunday May 4th at Huddersfield's impressive Alfred McAlpine Stadium.

The mere mention of Huddersfield brings back happy memories - remember the 6-0 hiding we handed out to them last October?

## Call ClubCall

Don't forget that the only way to find out exactly what is going on here at the County Ground is by ringing ClubCall on 0891 121 640 - the official voice of Swindon Town.



**What if  
a house went up for sale  
that was only 50 yards  
from the ground ?**




## **Nationwide Mortgages :**

You know the last house in the street you pass every Saturday just before the entrance to the ground? Well it could go on the market at any time. Imagine living in that house. You could leave for the match at five to three and still have time to get a burger before kick off, wake up every morning to see the glorious sight of deserted turnstiles, the same birds that eat worms from the pitch would also eat from your bird table. It's nice to know that should it become available you could get a mortgage quote and a decision, in principle, within an hour. To find out more about Nationwide mortgages or any other financial matter just give us a call. All the best for the season!

Call free on: **0800 30 20 10** quoting ref: FB038

or visit our football site on  
<http://www.nationwide.co.uk>

 **In tune with people**

 **Nationwide**  
**THE BUILDING SOCIETY.**

Mortgages are subject to status, valuation and security. Available to those aged 18 or over only. Written quotations available on request from Nationwide Building Society, Nationwide House, Pipers Way, Swindon SN38 1NW. Nationwide Building Society, Nationwide Life Limited and Nationwide Unit Trust Managers Limited represent only the Nationwide Marketing Group, which is regulated by the Personal Investment Authority for life assurance, pensions and unit trust products. Nationwide Unit Trust Managers Limited is also regulated by IMRO. Nationwide Telephone Advisors are introducers for the Nationwide Marketing Group. Please note that for various legal, regulatory and customer service requirements your call will be recorded. Nationwide is a member of the Building Societies Ombudsman Scheme and subscribes to the Code of Banking Practice.

**YOUR HOME IS AT RISK IF YOU DO NOT KEEP UP REPAYMENTS ON A MORTGAGE  
OR OTHER LOAN SECURED ON IT.**



# ***the manager***

## Steve McMahon says



***After our two previous results I was relatively pleased with what happened here at the County Ground last Saturday against Southend United.***

We got some pride back and there is no doubt that we should have won but overall I was a lot happier with the commitment shown by what was a patched up team due to injuries and suspension.

Lots of chances were created, we hit the woodwork three times and on another day we could have won quite comfortably.

But in the end we had to settle for a point and keeping a clean sheet was important as we had been leaking far too many goals.

Today we will need to show more battling qualities against an Ipswich Town side who are right up there in the race for promotion.

All credit to George Burley who despite having to sell a couple of players, has still managed to keep Ipswich up in the play-off picture.

Talking of selling players, that could be an option for us during the summer in a bid to raise funds to help me strengthen the squad.

We are going to try and raise as much money as possible by whatever means, whether it be by a share option or selling a player or two.

After a year of consolidation the time has come for us to be a bit more adventurous and really start to push for the play-offs.

The foundations are now set, we've done what we wanted to do and now we need to kick on. But to achieve that I need some money to spend.

In the meantime the current squad are now playing for their places for next season so our season is not dead by any means.

They also have a responsibility to play for you the fans and that's

what I will be looking for during our last few matches.

We still have some big games to play with Ipswich here today and Crystal Palace coming in a couple of weeks so there is no doubt we can have a say in who goes up.

And of course we go to Oxford next Saturday when there is a lot of local pride at stake.

On paper we are two mid-table teams who aren't going too many places but I can assure you that game will be a cracker - see you there!



*Steve McMahon*



# today's visitors

***This afternoon we welcome the players, supporters and staff of Ipswich Town Football Club to the County Ground. We hope that everybody enjoys the match and has a safe journey home after the game.***

Following their near miss of last season - when Ipswich finished in seventh spot after failing to beat Millwall in the season's final game - the Blues are once more in the promotion Play-Off hunt this time around.

The Portman Road Club suffered an up and down start to the current campaign, with League goals proving hard to come by following the £1 million sale of last season's top scorer, Ian Marshall, to Leicester and a subsequent shoulder injury to the equally prolific Alex Mathie which has kept him out action since October 1996.

But youngsters James Scowcroft and Richard Naylor have come in and done a good job up front for Ipswich, while the signing of defender Jason Cundy for £200,000 in November proved a masterstroke

by manager George Burley.

Cundy's power and experience at the back revitalised a struggling Ipswich side and led to a run of just two defeats in 16 League games from December until mid-March, helping the Blues climb the table into the Play-Off positions.

Unfortunately for Ipswich fans, that run was immediately followed by three losses in four games and a slip away from their newly-found top six status.

It would not be surprising to find supporters' minds elsewhere this afternoon, as Ipswich are scheduled to play host to close rivals Norwich in an eagerly anticipated East Anglian derby 'live' before the cameras of Sky TV on Friday night.

We have already faced Ipswich once this season, at Portman Road, when we ended a thrilling match on the wrong end of a 3-2 scoreline. Steve Sedgley - with a penalty - James Scowcroft and on-loan Gerry Creaney scored for the Blues that day.

We can rest assured that Steve McMahon and his troops will be doing their utmost to make amends for that result this afternoon.



**Ipswich Town Football Club 1996/97**



**Back Row: (left to right)**

Bobby Petta, Gus Uhlenbeek, Danny Sonner, Claus Thomsen (now Everton), Dave Williams (Physio), James Scowcroft, Kevin Gaughan, Leon Bell

**Middle Row: (left to right)**

Bryan Klug (Reserve Coach), Geraint Williams, Simon Milton, Kevin Ellis, Wayne Brown, James Holman, Craig Forrest, Richard Wright, Richard Naylor, Chris Swailes, Tony Vaughan, Adam Tanner, Dale Roberts (First Team Coach)

**Front Row: (left to right)**

Mauricio Taricco, Stuart Slater (now Watford), Ian Marshall (now Leicester), Paul Mason, Alex Mathie, George Burley (Manager), Tony Mowbray, Steve Sedgley, John Wark, Neil Gregory, Mick Stockwell, Lee Norfolk

# SWINDON TOWN





# a closer look at **Paul Mason**

***A prolific left-sided midfielder who is the Club's leading scorer for 1996/97, with 14 goals at the time of writing, Paul Mason certainly seems to have settled his differences with the Club he asked for a transfer last year.***

Formerly with Everton and FC Groningen (Holland), it was at Aberdeen that he really made a name for himself. During five seasons with the Scottish Premier Division Club Mason established himself as a major force in the Dons' midfield and enjoyed the highlight of his career to date when scoring

both goals as Aberdeen defeated Rangers in the 1990 Skol Cup Final.

As far as dramatic winners go, the 33-year-old Liverpoolian has something of a happy knack. In 1994/95 he scored twice as Ipswich beat mighty Man Utd 3-2 at Portman Road and then last season he scored a cracking 20-yarder to dump reigning Champions Blackburn out of the FA Cup at Ewood Park.

With an eye for goal and a powerful shot off either foot, Mason can create goalscoring chances from anywhere on the field.



## **FACT FILE..**

**Position:** Midfield

**Born:** Liverpool, 03.09.63

**Height:** 5ft 9in

**Weight:** 11st 12lb

**Trophies won:** Scottish League Cup 1990, Scottish Cup 1990

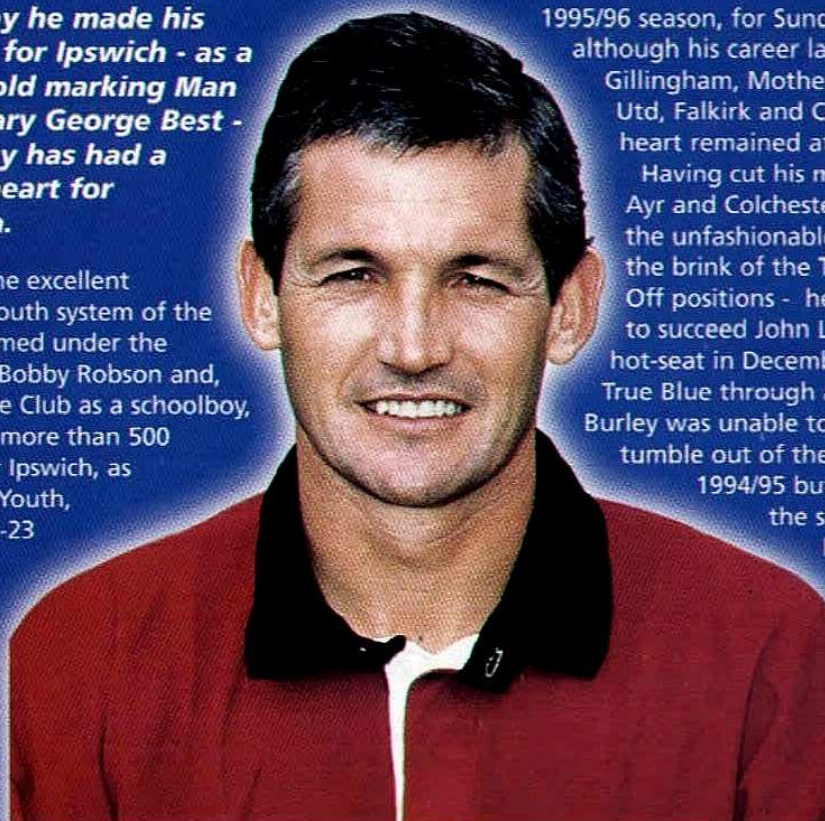
**League record last season:** 26 games, 7 goals

# **George Burley** the manager

***From the day he made his senior debut for Ipswich - as a raw 17-year-old marking Man Utd's legendary George Best - George Burley has had a place in his heart for Ipswich Town.***

A product of the excellent Portman Road Youth system of the 1970s, he blossomed under the managership of Bobby Robson and, having joined the Club as a schoolboy, went on to play more than 500 senior games for Ipswich, as well as winning Youth, Under-21, Under-23 and Full international caps for Scotland.

Burley finally left the Club midway through the



1995/96 season, for Sunderland, and although his career later took in Gillingham, Motherwell (twice), Ayr Utd, Falkirk and Colchester, his heart remained at Portman Road.

Having cut his managerial teeth at Ayr and Colchester - where he led the unfashionable Essex team to the brink of the Third Division Play-Off positions - he was appointed to succeed John Lyall in the Ipswich hot-seat in December 1994.

True Blue through and through, Burley was unable to prevent Ipswich's tumble out of the Premiership in 1994/95 but, having slashed the size of his squad, he led the Club to seventh spot in the First Division last season - and is hoping to go at least one better this time around.





# playerprofile

## I P S W I C H T O W N

First choice goalkeeper at Portman Road over the last couple of seasons - and one of the brightest young prospects in the country is 19-year-old **RICHARD WRIGHT**. A product of the highly-rated Ipswich Youth system, Wright has come up through the ranks at Portman Road to claim the number one shirt ahead of Craig Forrest, the Canadian number one who is currently on loan at Chelsea. An England Youth international, Richard was called up for training with the Full England squad under Terry Venables and has been tipped as a future international star.

His understudies at present are the on-loan **LEE BRACEY**, from Bury, and 18-year-old **JAMES HOLLMAN**, another teenager to have progressed from YTS at Portman Road.

Like many Clubs these days, Ipswich are often to be found employing two wing-backs, and **GUS UHLENBEEK** and **MAURICIO TARICCO** can claim to be among the best in the Nationwide League in that position. Uhlenbeek is a pacey right-sided player who came to Portman Road from SV Tops in his native Holland in the summer of 1995. Originally a wide midfielder, George Burley has switched him to defence with great effect. Taricco is one of the most improved players at Ipswich this season, and his contribution down the left flank - where he links well with top scorer Paul Mason - has been invaluable. An Argentine U23 international, Taricco signed from Argentinos Juniors as part of the same deal which took Uruguayan striker Adrian Paz to Portman Road early in the 1994/95 season. He struggled for a first-team place that term, but has become a valuable member of George Burley's squad over the last two years.

The experienced **TONY MOWBRAY**, formerly Middlesbrough and Celtic, has recently returned to first-team action after a lengthy spell sidelined with hernia and groin problems. An England 'B' international, he is the Club Captain and a determined competitor.

**TONY VAUGHAN** is one of several home grown youngsters to be making a name for themselves in the Ipswich first-team. On the books of Manchester City as a boy, this 21-year-old former

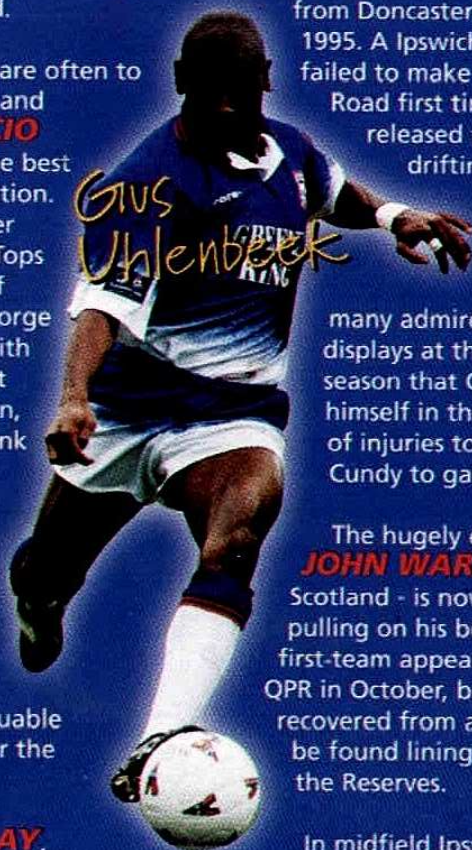
England Youth and Schools international is a strong and aggressive left-back or central defender who has already played more than 50 senior games.

The £200,000 signing of **JASON CUNDY** in November has proved to be the move which transformed Ipswich from also-rans to Play-Off contenders. Originally brought to Portman Road on loan, the former Chelsea and Tottenham defender has given his new Club added strength and stability at the back. It is no coincidence that the Blues' recent poor run has come while Cundy has been sidelined with a shin injury.

**CHRIS SWAILES** became George Burley's first signing for Ipswich when he moved from Doncaster for £225,000 in March 1995. A Ipswich trainee as a youngster he failed to make the grade at Portman Road first time round and was released to Peterborough before drifting into non-League football. Doncaster signed him from Guisborough in October 1993 and he quickly won many admirers with his powerful displays at the back. It is only this season that Chris has established himself in the squad, making the most of injuries to the likes of Mowbray and Cundy to gain a first-team foothold.

The hugely experienced **JOHN WARK** - ex-Liverpool and Scotland - is now in his 40th year and still pulling on his boots for the Club. His last first-team appearance came in a 1-0 win at QPR in October, but he has recently recovered from a back injury and can still be found lining up for the Reserves.

In midfield Ipswich can call upon the services of the long-serving **MICK STOCKWELL**, who recently became Ipswich's fifth highest appearance maker of all-time - one place behind his current boss George Burley. An enthusiastic and skilful right-sided player who is happy in defence or further forward - and has even played at centre-forward for the Club - Mick has enjoyed a fruitful partnership with Gus Uhlenbeek this season and has grabbed six goals at the time of writing





# Ipswich

## PLAYER PROFILE



Last season's Player of the Year at Portman Road was **SIMON MILTON**, a local non-League discovery who signed for £5,000 back in July 1987 and who helped the Club to the old Division Two title in 1992. A shrewd passer of the ball with an eye for goal, injuries have restricted his appearances this term when he has been stuck on 49 League goals for the Club.

**DANNY SONNER** is a Northern Ireland 'B' international who was snapped up on a free transfer from German Club Preussen Koln last summer and has scored some spectacular goals for Ipswich this season. Signed mainly as a midfield playmaker, Sonner has lost his place in recent weeks to record signing **STEVE SEDGLEY**.

Formerly with Coventry and Tottenham, Sedgley is a classy performer who is equally happy in the centre of defence, as a sweeper or in midfield. Ipswich's penalty-taker he recently played his 100th League game since signing for £1 million from Tottenham in June 1994.

Recently returned to the first-team fold after serving a three month ban after testing positive for cocaine in January, **ADAM TANNER** is a highly-regarded youngster who will be looking to put the past behind him and re-establish himself in the senior side.

Former Welsh international **GERAINT WILLIAMS** began his career with Bristol Rovers before moving to Derby, from where he joined Ipswich for £650,000 in July 1992. A highly competitive midfielder who relishes a battle, Williams has scored just two goals for Ipswich in nearly 190 League games.

The latest player to have stepped from the youth ranks at Portman Road is 18-year-old England Youth international **KIERON DYER**. A gritty competitor despite his wiry frame, Dyer is a good passer of the ball and not afraid to have a go at goal.

Another youngster to have made his first-team debut this season is Scotland Youth midfielder **STUART NIVEN**.

**BOBBY PETTA** is the second of Ipswich's two Dutch stars, having moved to Portman Road from

Feyenoord on a free transfer in July 1996. Lightning quick, with good skills, Petta has struggled with illness and injury this term, but this former Holland Under-21 international is still sure to pose a potent threat when called upon.

Last season's top scorers in England, Town have struggled for goals a little this term thanks to the loss of both of 1995/96's top scorers - Alex Mathie (shoulder injury) and Ian Marshall (sold to Leicester).

But in 21-year-old **JAMES SCOWCROFT** they can call on a player who has won many admirers this term with his strength, power in the air and good touch. An England Under-21 cap, Scowcroft has scored seven times so far this season at the time of writing, with a double up at Bolton handing the Trotters their only home defeat this season.

Combative 20-year-old **RICHARD NAYLOR** - nicknamed Bam-Bam at the Club after the Flintstones character - won representative honours at rugby as a schoolboy but chose to follow a career in football. Transformed from central defence to a powerful striker at Ipswich, Naylor is not afraid to put his head in where it hurts in pursuit of goal, courage which earns him more than his fair share of both bookings and injuries.

Zambian-born **NEIL GREGORY** is yet another player to have progressed from the Youth team to the senior side at Portman Road, although he has struggled for first-team chances. Loan spells at Chesterfield and Scunthorpe - where he netted seven times in 10 appearances - have given him the majority of his League experience, and he was comfortably top scorer in the Avon Insurance Combination League for last season. Injuries to Scowcroft and Naylor gave Gregory his first-team chance at home to QPR in February - and he responded by scoring five goals in eight games, including a neatly taken hat-trick against Sheffield United.

Finally, George Burley took Swedish international **NIKLAS GUDMUNDSSON** on loan from Blackburn Rovers shortly before Transfer Deadline Day and the powerful striker provides important cover up front for Ipswich.



# Ipswich

## VITAL STATISTICS



### Ipswich's record over the last 10 years

Season	Div	P	W	D	L	F	A	Pts	Pos
86/87	2	42	17	13	12	59	43	64	5th
87/88	2	44	19	9	16	61	52	66	8th
88/89	2	46	22	7	17	71	61	73	8th
89/90	2	46	19	12	15	67	66	69	9th
90/91	2	46	13	18	15	60	68	57	14th
91/92	2	46	24	12	10	70	50	84	1st
92/93	P	42	12	16	14	50	55	52	16th
93/94	P	42	9	16	17	35	58	43	19th
94/95	P	42	7	6	29	36	93	27	22nd
95/96	1	46	19	12	15	79	69	69	7th



**10 YEAR  
RECORD**

### OUR LEAGUE RECORD AGAINST IPSWICH TOWN SINCE THE 50'S

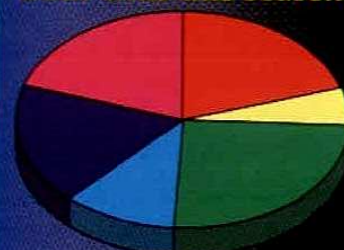
Home	Div	Result
15-Apr-1950	3(S)	0-3
17-Mar-1951	3(S)	2-0
15-Mar-1952	3(S)	1-2
25-Apr-1953	3(S)	2-0
24-Oct-1953	3(S)	1-2
31-Dec-1953	3(S)	0-1
15-Sep-1955	3(S)	3-1
31-Oct-1964	2	3-1
28-Dec-1987	2	4-2
12-Nov-1988	2	2-3
14-Oct-1989	2	3-0
28-Aug-1990	2	1-0
20-Dec-1991	2	0-0
20-Nov-1993	Prem	2-2
Away	Div	Result
28-Jan-1950	3(S)	1-3
28-Oct-1950	3(S)	1-4
27-Oct-1951	3(S)	5-1
15-Apr-1953	3(S)	1-1
24-Apr-1954	3(S)	0-2
03-Sep-1955	3(S)	2-6
19-Jan-1957	3(S)	1-4
13-Mar-1965	2	0-0
19-Sep-1987	2	2-3
04-Mar-1989	2	2-1
20-Mar-1990	2	0-1
08-Dec-1990	2	1-1
03-Sep-1991	2	4-1
16-Apr-1994	Prem	1-1
19-Nov-1996	1	2-3

Swindon score first

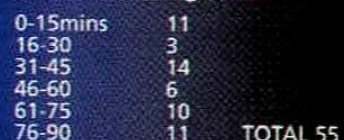
### How Ipswich Town have performed so far this season

Date	Opps	H/A	Result	Scorers (Goal times)
Aug 16	MAN CITY	(a)	L0-1	
Aug 24	READING	(h)	W5-2	Vaughan (12,68), Sedgley (45pen), Taricco (72), Scowcroft (87)
Aug 27	GRIMSBY	(h)	D1-1	Mason (21)
Aug 31	OLDHAM	(a)	D3-3	Mathie (12,74), Stockwell (22)
Sep 07	HUDDERSFIELD	(h)	L1-3	Mason (76)
Sep 10	C.PALACE	(a)	D0-0	
Sep 14	SHEFF UTD	(a)	W3-1	Sedgley (63), Scowcroft (77,81)
Sep 20	CHARLTON	(h)	W2-1	Sedgley (56), Mathie (72)
Sep 28	WEST BROM	(a)	D0-0	
Oct 01	BARNLEY	(h)	D1-1	Mathie (63)
Oct 11	NORWICH	(a)	L1-3	Sonner (46)
Oct 15	BIRMINGHAM	(a)	L0-1	
Oct 19	PORTSMOUTH	(h)	D1-1	Mason (33)
Oct 26	TRANMERE	(h)	L0-2	
Oct 30	QPR	(a)	W1-0	Mason (66)
Nov 02	OXFORD	(a)	L1-3	Tanner (45)
Nov 09	SOUTHEND	(h)	D1-1	Stockwell (7)
Nov 16	BRADFORD	(a)	L1-2	Cundy (37)
Nov 19	SWINDON	(h)	W3-2	Scowcroft (1), Creaney (51), Sedgley (60pen)
Nov 23	PORT VALEa	(h)	W2-1	Tanner (33), Mason (76)
Nov 30	TRANMERE	(a)	L0-3	
Dec 07	WOLVES	(h)	D0-0	
Dec 14	BOLTON	(a)	W2-1	Scowcroft (39,89)
Dec 21	STOKE	(h)	D1-1	Mason (36)
Dec 26	C.PALACE	(h)	W3-1	Tanner (44pen), Mason (52), Naylor (79)
Dec 28	HUDDERSFIELD	(a)	L0-2	
Jan 01	CHARLTON	(a)	D1-1	Tanner (43pen)
Jan 18	BARNLEY	(a)	W2-1	Mason (54), Cundy (67)
Jan 25	WEST BROM	(h)	W5-0	Holmes (60g), Scowcroft (31), Stockwell (35), Naylor (44), Mason (69)
Feb 01	SOUTHEND	(a)	D0-0	
Feb 08	QPR	(h)	W2-0	Naylor (6), Gregory (82)
Feb 15	PORT VALE	(a)	D2-2	Mason (9), Stockwell (69)
Feb 22	OXFORD	(h)	W2-1	Naylor (45), Stockwell (89)
Mar 01	WOLVES	(a)	D0-0	
Mar 04	BRADFORD	(h)	W3-2	Sedgley (17pen), Sonner (88), Gregory (90)
Mar 08	STOKE	(a)	W1-0	Taricco (7)
Mar 15	BOLTON	(h)	L0-1	
Mar 18	SHEFF UTD	(h)	W3-1	Gregory (1,10,36)
Mar 22	READING	(a)	L0-1	
Mar 31	GRIMSBY	(a)	L1-2	Mason (10)

### The times the goals have gone in for Ipswich at both ends this season.



League goals scored this season clockwise starting at RED



League goals conceded to date clockwise starting at RED



Time Interval	Goals
0-15	5
16-30	9
31-45	10
46-60	6
61-75	12
76-90	7
<b>TOTAL</b>	<b>49</b>



# QuickQuiz!

## the question is...

**Settle down with your half-time cuppa and test your soccer knowledge.**

1. At which club is Walter Smith the manager?
2. From which club did Norwich sign Carl Bradshaw?
3. Who do Liverpool play in the Semi-Finals of the European Cup-Winners' Cup?
4. At which ground do Barnsley play their home games?
5. What is Luton's nickname?
6. Which club knocked Blackburn out of this season's FA Cup?
7. For which country is Nottingham Forest's Dean Saunders an international?
8. Scotland beat Austria 2-0 in a recent World Cup tie thanks to a double strike from who?
9. What is the nickname of Sheffield United?
10. In which year did Wimbledon win the FA Cup?
11. Which country has won the World Cup four times?
12. If Alan Fittis saved a penalty from Patrick Vieira, which two teams would you be watching?
13. Who are the current European Championship holders?
14. For which First Division club does Jon McCarthy play?
15. Which Republic of Ireland star was sent-off against Macedonia recently?

## WHO AM I?

1. This former Fulham and W.B.A midfielder won 20 England Caps.
2. After coaching Oxford University and Vancouver Royals he became manager at Ipswich for 8 years.
3. He became England manager for 90 games before handing over to Graham Taylor.
4. He has since managed P.S.V. Eindhoven, Porto and Barcelona.

## RULES OF THE GAME!

A player takes a throw in which goes straight into the opponents net. What should the referee award?

- A. A goal
- B. Retake the throw in
- C. Award a goal kick to the opposition

## HOME & AWAY..

### HOME....

1. From which club did we sign Mark Seagraves?
2. At which club did our manager Steve McMahon start his playing days?
3. In which year did we win the League Cup?

### ....AND AWAY

1. Paul Mason has played League football in which two other countries?
2. James Scowcroft has been capped at England Under-21 level. True or false?

## CLOSE UP! WHOSE CREST?



**Answers....** 1. Rangers. 2. Sheff Utd. 3. Paris St Germain. 4. Oakwell. 5. Hatters. 6. Coventry. 7. Wales. 8. Kevin Gallacher. 9. Blades. 10. 1988. 11. Brazil. 12. Forest and Arsenal. 13. Germany. 14. Port Vale. 15. Jason McAteer. **Home:** 1. Bolton. 2. Everton. 3. 1969. **Away:** 1. Scotland and Holland. 2. True. **Who am I:** Bobby Robson **Rules of the Game:** ans. C. **Whose Crest:** Derby County.



# a brief look back

## **Dick Mattick looks back ...**

***In recent years there has been some debate about the exact founding date of Swindon Town F.C. This arises over whether it should be from the merging of the Spartans of Old Town with the St Marks Church team from New Town, or, whether the origin of one of the founder clubs should be the date. The club itself seemed to have taken the former course when at the start of the 1981-2 season they staged a Centenary match.***

The visitors were Ipswich Town, at the time holders of the UEFA Cup which they won by defeating AZ 67 of Alkmaar in the Final. Before the match started the Ipswich team paraded the trophy around the ground and Swindon defender Russell Lewis was presented with his player of the Year award won the previous season.

David Peach, Kenny Stroud and Andy Rowland were missing from the Swindon team due to injury while Chris Kamara was omitted by manager John Trollope as he was in dispute over signing a new contract.

Ipswich took the lead in the 29th minute when Russell Osman moved out of defence to head home a free kick by Dutchman Arnold Muhren but apart from this, Swindon's inexperienced defence which had an average age of just 20, hung on well and a much improved display on the 1-0 defeat at Witney in the previous friendly was given.

Swindon commemorated their visit with a centenary Magazine costing 40p. In it Bob Jeffries, the Swindon Administrative Manager/Secretary wrote *"It is unfortunate that we reach our Centenary at a time when economic pressures are presenting great difficulty to most clubs within the Football League."* Ah well some things never change.

## **Teams**

***Swindon:*** Allan, Henry, Baddeley, Hughes, Lewis, Graham, Pritchard, Emmanuel, Rideout, Greenwood and Carter. Sub: Beamish

***Ipswich:*** Cooper, Mills, McCall, Thijssen, Osman, Butcher, Parkin, Muhren, Mariner, Gates and O'Callegan. Subs: D'Avray, Steggles and Gernon.

***Jimmy Allan dives bravely at the feet of Eric Gates during the centenary match against Ipswich***

ARKELLS BEERS





# talkin' tactics

with First Team Coach Mike Walsh



***We said last week that it was important to show a determination and effort if the football wasn't brilliant against Southend.***

And we didn't let ourselves down in that department as that was exactly the way the game went.

We didn't have our strongest side out and it was a good test of character not just for the players out there but for the Club in general.

To restrict them to just one shot on target in 90 minutes says a lot for the determination of the players to keep our opponents out.

And of course it was pleasing to keep a clean sheet, particularly having conceded so many goals in the two games before that.

We defended well as a team and on another day we could have emerged with a comfortable victory after hitting the woodwork three times and their keeper putting in a man of the match performance.

It was an important point to collect and now we need to continue with improved performances until the end of the season.

Today's game is a massive one for Ipswich who are still in with a chance of making the play-offs but we won't be doing anyone any favours and we're just as keen to finish off the season in style.

We're starting to build now towards next season with several players fighting for contracts so there is still a lot to play for even though we can no longer finish in the top six.

Finally a quick word about the Chief Wayne Allison.

It was great to see him score a couple of goals for the Reserves during the week against West Ham after completing his three match suspension and no doubt he'll be itching to get a start today.

We've missed his presence in both boxes and it will be a big boost to have him back.

Enjoy the game and I'll speak to again at the Crystal Palace match.

SWINDON TOWN.  
STILL LOOKING SHARP  
THIS SEASON.

Swindon Town Football Club will be looking just as good this season.  
Thanks to their exclusive Mizuno strip.





# SEE EVERY GOAL

Goals, goals, goals! See every goal from the weekend with ITV's NATIONWIDE FOOTBALL LEAGUE EXTRA, in association with Nationwide Building Society.

We'll be on air just after midnight on Mondays and repeated later in the week in many regions. The programme is introduced by Gabriel Clarke and includes interviews, competitions, the latest news and talking points, and all the goals scored at the weekend from the Nationwide Football League.



CHECK YOUR TV LISTINGS FOR DETAILS AND SET YOUR VIDEO



PICTURE COURTESY OF TOMMY HILL LTD 0117 916 3701

# SAVE UP TO £140

ON SELECTED ITEMS



This offer is available for a limited period only. Motolec reserves the right to change products or prices without prior notice. All prices include VAT unless otherwise stated.

**WAS**  
£489.99

**MEGA DEAL**  
£349.99

**FANTASTIC OFFER**



**Clarion** ARX5170V  
CAR AUDIO • BEYOND  
RADIO CASSETTE  
WITH CD CHANGER  
CONTROL

**UNDEBTABLE  
CD PACKAGE**

- detachable fascia
- 30W x 4 max
- 24 presets
- CD changer control

**CDC605**

**CD CHANGER**

- 6-disc magazine
- 8-times over-sampling digital filter
- quick disc-to-disc loading

**WAS**  
£269.99

**NOW ONLY**  
£199.99

**GREAT SAVING OF £70**



**JVC**

**KD-GS611**

**SINGLE DISC CD PLAYER**

- detachable fascia • 24 presets
- 25W x 4 max • random, skip, search, repeat functions

**FREE  
FITTING**

**GREAT VALUE**  
£129.99

**INCLUDES FREE FITTING**

**KENWOOD**



**KRC 151 LA**

**RADIO CASSETTE**

- detachable fascia
- 20W x 4 max
- auto reverse cassette

**NEW  
FOR '97**



# league update

by Colin Benson



**We are almost at the end of yet another season with just one more home game to play - Crystal Palace - after today.**

This time last year of course the County Ground was a hive of excitement as we carried off the Second Division Championship in style. Today the buzz might be missing as we plod to a mid table finish but the ambition is still as bright as ever.

When all is said and done Steve McMahon has delivered the goods yet again. Okay the Gaffer, like many of our supporters, has been disappointed and frustrated with some of our performances because he felt that more could have been achieved at the time. Yet if we reflect back a year to those glorious scenes of triumph and the immediate plans for the future you will recall the target this season was simply to establish ourselves in Division One.

There can be no argument that this has been achieved and next season no doubt the manager will be steering us on the next step as we move towards the Premiership. Better he should build firm foundations from which to launch our challenge than go careering through the divisions to end up again as one season visitors to the Premiership.

Patience is a word Steve McMahon often uses and it

applies to us all. It might be hard to sit back and see others fighting for the honours this spring but our time will come again. Perhaps bottom of the table **Southend** had more to play for last Saturday but three times the **Southend United** goal frame denied us victory.

Congratulations to **Bolton** who return to the Premiership, promotion assured with five games still to play. They needed one point at **Manchester City** on Wednesday to clinch the Championship and manager Colin Todd can now plan how best he is going to invest the £20 million transfer fund that is being made available to him.... eat your heart out Steve!

There will be celebration at Burnden Park this afternoon though **Oxford United** will do their best to spoil the party. Our neighbours were tripped up at home by **Port Vale** last week but if **Bolton** were successful at Maine Road they might capitalise on the reaction.

The big issue now is who will finish second. **Barnsley** looked favourites until they lost at home to **Birmingham** while Welsh international Iwan Roberts was revitalising **Wolves'** challenge. He netted a late winner in a bruising 3-2 victory over **Norwich** at Molineux.

**Barnsley** still have the edge. They are a point ahead of **Wolves** and have a game in hand but the pressure is on for maximum points from the home game with **Charlton** today. It looked like a bad attack of promotion jitters as **Birmingham** snatched victory - it was the Tykes first defeat in 11 games. **Wolves** have no qualms about their trip to

**Reading** their away record is second to none and Elm Park will be smothered in black and gold favours. I expect **Bully** and **Wolves** to shade it.

The battle for the play-offs gets even hotter. **Sheffield United** beaten at home by **West Brom**, are still well placed but looking decidedly vulnerable. Indeed **Port Vale** are the in-form team in this group with **Portsmouth**, **Ipswich**, **Crystal Palace**, **Norwich** and **Tranmere** spluttering hot and cold.

John Rudge must be expecting another three points from **Oldham**. The Latics, destroyed 4-0 at **Ipswich** last week, really do look Second Division bound. True Neil Warnock has them more organised and has ignited some passion from his men, and I hear from an insider that he will be offered the job at the end of the season come what may, but it looks as if he is going to have to follow in Steve McMahon's footsteps and drop down before coming up. The man they will have to watch today is Lee Mills - 7 goals in six games for the Vale Striker.

The **Portsmouth** v **Tranmere** clash is the First Division match of the day. Pompey are three points and four places better off but made hard work of beating **Grimsby** 1-0 at Fratton Park on Saturday. Jimmy Carter, once on **Arsenal's** books, was the hero in his first appearance since November.

**Crystal Palace** seem to have lost some direction since the departure of Dave Bassett. The Eagles have won only one of their last five at Selhurst Park so will welcome the trip to Bramall Lane. It's a real six-pointer.



# Action replay

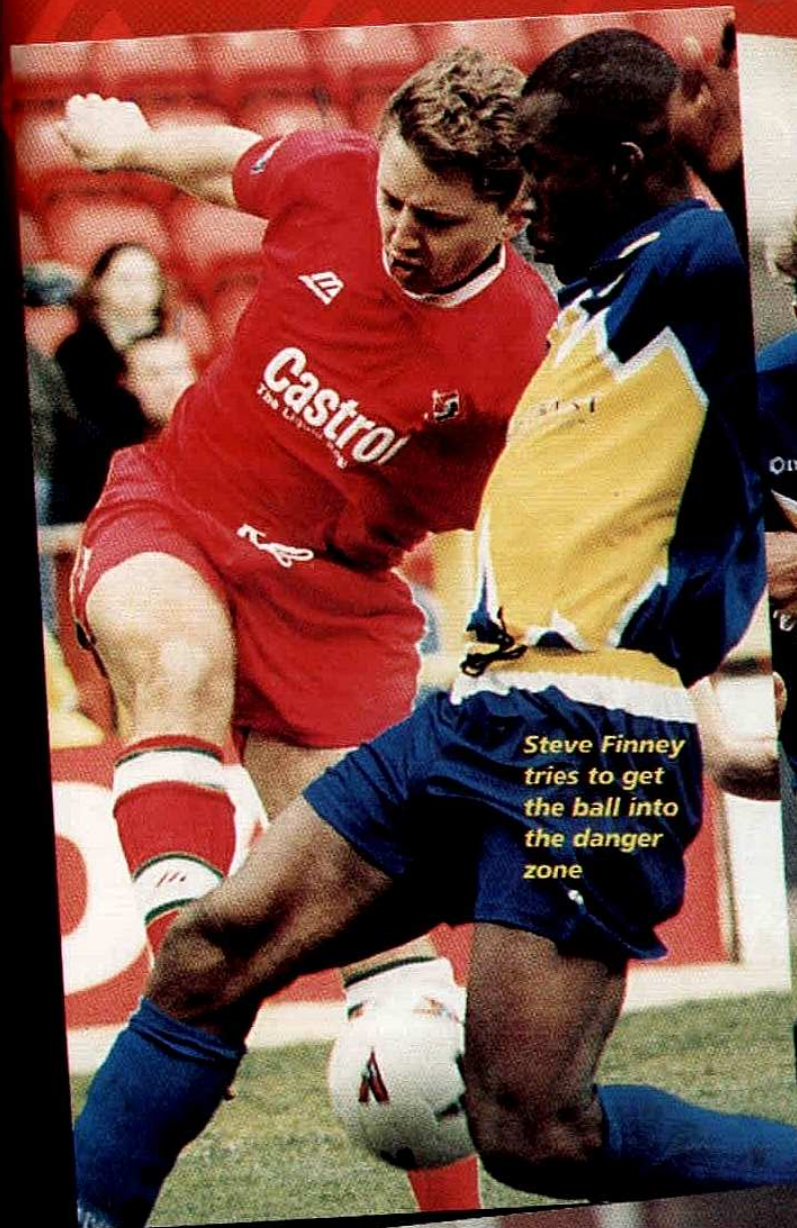
*Skipper  
Scott Leitch  
slides in to win  
a tackle against  
Southend*

*Double trouble -  
Peter Thorne is  
closed down by  
two defenders*

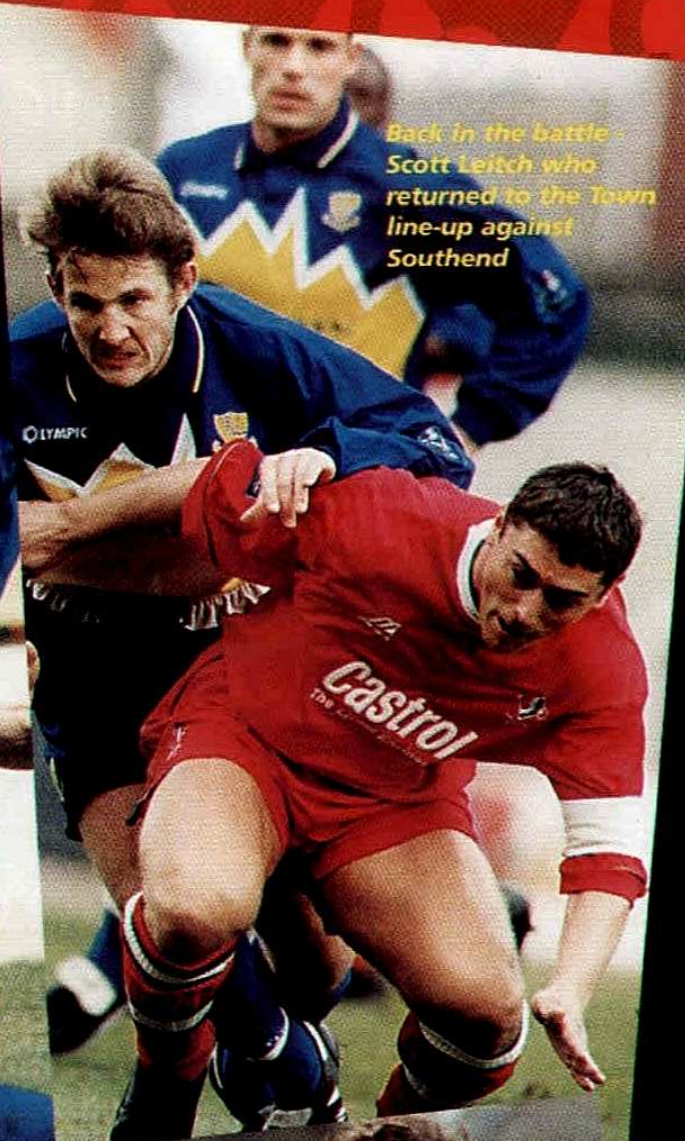
*Frederic Darras is  
denied by a sliding  
Southend tackle*

*Fraser Digby  
punches clear  
under pressure*





Steve Finney tries to get the ball into the danger zone



Back in the battle - Scott Leitch who returned to the Town line-up against Southend



Flying feet - Peter Thorne tangles with an opponent last Saturday

**SATURDAY 5TH APRIL 1997**  
**Swindon Town 0 Southend 0**  
**NATIONWIDE LEAGUE DIVISION 1**  
**Attendance 6,730**





# community scheme news

Today we would like to extend a warm Saturday Team Club welcome to our guests from Swindon 6th Cubs group, FC Chippenham Youth and Hardwick.

We hope you enjoyed your coaching this morning and let's hope we are in for a great match this afternoon.

I would personally like to take this opportunity to thank everybody at Liden Pumas for making us so welcome at their Fun Day on March 23rd.

It was a brilliant afternoon and everyone appeared to have a thoroughly enjoyable time.

The semi final stages of the Community Office Eight-a-Side tournament are to be played on Friday 18th at Greendown.

The draw sees Windmill Hill take on Wroughton and Southfield playing against Lethbridge in what promise to be two cracking encounters.

The games start at 4pm and will consist of 10 minutes each way. I'll give you full reports on both encounters in our final column in two weeks time when we take on Crystal Palace here at the County Ground.

*Until then take care and we will see you soon.*



**Sponsors of the Saturday Team Club**  
Tel: (01793) 432840



Clive  
Maguire

Jon  
Holloway



The next courses are commencing week beginning Monday 7th April. The T-shirts have been a great success adding to the professionalism of the scheme (Please find cost for T-shirts listed below, and if you would like to purchase one, see your coach). So, don't delay and enroll at the course and centre which apply to you.

Cost - £14.00 FOR 7 WEEK COURSE  
- £3.50 T-SHIRT

#### Link Centre

Monday	5.30pm - 6.30pm	5-6 + 9-11 years
Thursday	4.30pm - 5.30pm	5 years
	5.30pm - 6.30pm	7-8 years

#### Oasis

Monday	5.00pm - 6.00pm	9-11 years
Wednesday	5.00pm - 6.00pm	12-14 years
Saturday	9.00am - 10.00am	5-8 years
	10.00am - 11.00am	5-8 years

#### Stratton

Monday	3.30pm - 4.30pm	5-6 years
	4.30pm - 5.30pm	9-11 years
Wednesday	3.30pm - 4.30pm	7-8 years

#### Highworth

Tuesday	4.00pm - 5.00pm	5-6 years
	5.00pm - 6.00pm	7-8 years
Thursday	4.00pm - 5.00pm	9 years +
	5.00pm - 6.00pm	9 years +

#### Marlborough\*

Wednesday	4.00pm - 5.00pm	5-11 years
	5.00pm - 6.00pm	11-16 years

\* (Marlborough is not Thamesdown Borough Council so costing is different and courses are by term)

Swindon Town Football Club's Community Scheme is kindly supported by:





# the junior robins

with Louise Kaye

Sponsored by



## Granada Studios

Unfortunately, this trip has been cancelled due to lack of response but we were due to travel on Cup Final Day. However, I do hope to organise another trip during the summer holidays and I'll keep you tuned.

## Have Your Say

Swindon Town are proud of their junior supporters and offer one of the best packages in the league for the Junior Robins. We do however, want to expand on the benefits and find out what you like, dislike and how you think we could improve the membership and that is why you have all received a questionnaire. Thanks to everyone who has returned theirs already and it is still not too late to have your say. Plus, if you get them back to me before the 14th April your name will go into a draw to win a day out at the County Ground. All questionnaires returned by the end of the season will be gratefully received.

## Junior Eagles Visit

Saturday 26th April sees our last home game of

the season against Crystal Palace. It's only two weeks since the Eagles and Robins last played a football friendly, prior to the international game, where everyone had a fantastic day. The Junior Eagles will be visiting the County Ground for pre-match activities and if you would like to join in the fun for the last time this season, meet at the changing block at 11:00am.



*Last week at the County Ground we played Southend United and the Town's mascots were from left, Alex Cannon, Kieran Gennoy and Jonathan Wheeldon.*

## today's lucky mascots



**Ben Jenkins** will be 8 years old on Wednesday so many happy returns from everyone at Swindon Town.

Ben from Lechlade, attends St. Clotilde's School and his hobbies include football, golf and athletics. His favourite Town players are Wayne Allison and Mark Seagraves.

School. Sean lives in Lechlade and he enjoys football, water skiing and golf. Sean's favourite team is of course, Swindon Town.

**Scott McCue** is 6 years old and lives in Swindon.



He attends Even Swindon School and he loves football, especially Swindon Town. I

am sure he will be delighted to meet his favourite players, Fraser Digby and Wayne Allison today.

We hope all our mascots have a very enjoyable day.



Swindon Town are pleased to announce that our lucky matchday mascots are now sponsored by Little Chef and Burger King at the Turnpike Roundabout.



**Sean Kane** celebrated his 8th birthday on the 6th April and is a pupil at St. Clotilde's





## Fixtures 96/97

### South East Counties League Division 2

SAT	AUG 17	Brighton & Hove	A	2-0
SAT	AUG 24	BRENTFORD	H	3-2
SAT	AUG 31	Bristol City	A	1-1
SAT	SEP 07	BRISTOL ROVERS	H	8-0
SAT	SEP 14	PORTSMOUTH (LC1)	H	0-3
SAT	SEP 21	Reading	A	3-2
MON	SEP 23	BARNET (SJFC 1)	H	3-1
SAT	SEP 28	COLCHESTER UNITED	H	1-2
SAT	OCT 05	Southampton	A	0-2
SAT	OCT 12	LUTON TOWN	H	2-2
Tues	OCT 15	Arsenal (SJFC 2)	A	1-3
SAT	OCT 19	Wycombe Wndrs.	A	1-1
TUES	OCT 22	HEREFORD (MYC 1)	H	4-0
SAT	OCT 26	Tottenham Hotspur	A	1-1
SAT	NOV 02	OXFORD UNITED	H	1-1
SAT	NOV 09	CRYSTAL PALACE	H	1-2
SAT	NOV 16	Wimbledon	A	1-0
SAT	NOV 23	Luton Town	A	1-2
SAT	NOV 30	WYCOMBE W.	H	0-3
Wed	DEC 04	Torquay Utd (FAYC 1)	A	1-1
SAT	DEC 07	Barnet	A	4-1
WED	DEC 11	TORQUAY UTD (FAYC 1 REPLAY)	H	0-2
WED	DEC 18	WOLVES (MYC 2)	H	2-2
SAT	DEC 21	BRIGHTON & H.A.	H	3-0
SAT	JAN 18	Bristol Rovers	A	2-1
Wed	JAN 22	Wolves (MYC 2 replay)	A	2-1
SAT	JAN 25	READING	H	2-3
SAT	FEB 01	Brentford	A	1-1
SAT	FEB 08	Colchester United	A	0-3
TUES	FEB 18	STOKE CITY (MYC SF1)	H	0-1
SAT	MAR 01	TOTTENHAM HOTSPUR	H	2-1
SAT	MAR 08	Oxford United	A	2-3
Tue	MAR 11	Stoke City (MYC SF2)	A	1-0*
SAT	MAR 15	WIMBLEDON	H	0-0
SAT	MAR 22	Crystal Palace	A	1-5
Thu	APR 3	Southampton	A	2-0
SAT	APR 12	BARNET	H	
TBA		AFC BOURNEMOUTH	H	
TBA		AFC Bournemouth	A	
TBA		BRISTOL CITY	H	

Home fixtures kick-off at 11.00am - Kick-Off times are subject to change without prior warning.

\* Lost 6-5 on penalties

## Fixtures 96/97

### West County Television South West Counties Youth League

AUG 24	Bristol City	A	2-1
AUG 31	CARDIFF CITY	H	0-4
SEPT 07	Cheltenham Town	A	0-1
SEPT 14	CIRENCESTER TOWN	H	1-1
SEPT 21	Exeter City	A	1-1
SEPT 28	Hereford United	A	1-0
OCT 12	SWANSEA CITY	H	1-1
OCT 26	AFC Bournemouth	A	1-1
NOV 02	BASHLEY	H	3-1
NOV 09	Bashley	A	0-3
NOV 16	BRISTOL CITY	H	2-1
NOV 23	Cardiff City	A	0-7
NOV 30	CHELTENHAM TOWN	H	1-1
DEC 07	Cirencester Town	A	1-1
DEC 11	Plymouth Argyle	A	1-3
JAN 18	Swansea City	A	3-2
JAN 25	Torquay United	A	2-3
FEB 01	AFC BOURNEMOUTH	H	0-0
FEB 08	EXETER CITY	H	1-2
FEB 19	HEREFORD UNITED	H	0-2
FEB 26	TORQUAY UNITED	H	4-2
MAR 05	PLYMOUTH ARGYLE	H	1-2
MAR 8	Bashley (League Cup)	A	1-1*
MAR 15	Cardiff (League Cup)	A	1-4
APR 5	CHELTENHAM (LCOF)	H	4-2

All home Saturday fixtures kick-off at 11.00am - Wednesday fixtures kick-off at 2.00pm.

\* Won 4-1 on penalties

# youth team focus



with Tommy Wheeldon

## South East Counties League Division Two

### Southampton Youth 0 Swindon Town Youth 2

We recently travelled to Marchwood to play a rescheduled league fixture with Southampton who were lying in third place with aspirations of winning the championship should Luton Town or Crystal Palace slip up.

But we certainly threw a spanner in the works as the boys produced their best performance of the season to clinch a 2-0 win.

This result was even more pleasing as it was shortly after some arduous travelling back from Belgium and it was achieved with two schoolboys in the team.

All of the players played their part in a marvellous team effort with some fine individual displays notably by Alex Finlayson up front who probably had his best game for the Youth team.

Thomas Wheeldon and Stuart Hodson defended solidly to give ample protection for our trialist goalkeeper Vinney Stringer and I also admired the performance of Chris O'Connell who

has been on the outside looking in mainly due to his strength, but he showed some lovely skills and took his opportunity well.

Chris scored the first goal after 15 minutes when he cut in and placed his shot wide of the keeper following a lovely move down the left flank.

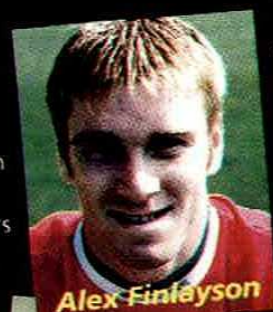
Paul McAreavey, our other schoolboy, then had two wonderful chances to wrap the game up in the first half but managed to slide his efforts inches wide of the target after some great inter-passing in the midfield.

In the second half Southampton caused us problems from their dangerous in-swinging corners but the defence and goalkeeper Stringer stood firm.

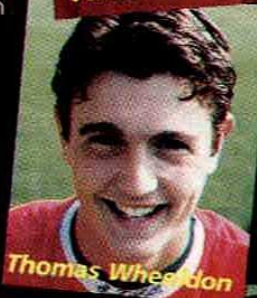
The lads then began to dictate the play and it was no surprise when we scored a second after 65 minutes through Sol Davis who powered home a header following good work by Chris O'Connell.

During the closing stages the boys kept possession and played some attractive, neat football in the right areas to produce a very professional display against one of the best teams in the South East Counties League.

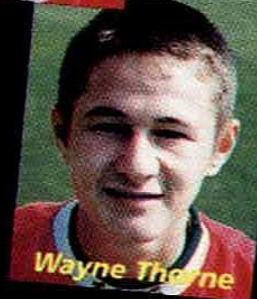
Team: Stringer, Pattimore, Wheeldon, Hodson, Thorne, Coupe, MacDiarmid, Hunt, Davis, O'Connell, Finlayson,  
Sub: Meechan.



Alex Finlayson



Thomas Wheeldon



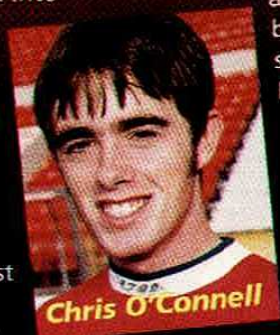
Wayne Thorne



**South West Counties  
League Cup quarter final  
Swindon Town Youth 4  
Cheltenham Youth 2**

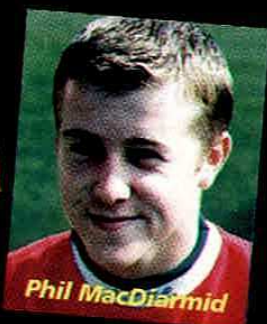
A gutsy all round performance by Swindon put them into the semi finals of the League cup competition after seeing off the strong challenge of Cheltenham.

Playing with a strong wind in their favour during the first half, Swindon impressed with some neat inter-passing and they got a deserved break through when Chris O'Connell scored with a fine finish.



**Chris O'Connell**

After the interval Swindon were subjected to an onslaught but with Gareth Cope and Stuart Hodson holding the defence together Cheltenham were unable to find a way through and it was Swindon who broke away to score a second through Alex Meechan.



**Phil MacDiarmid**

Swindon then began to control proceedings and a well taken header by Mark Simpkins made it 3-0 before the visitors pegged one back.

A goal by Simon Futchter put the issue beyond doubt and although Cheltenham scored a late consolation there was no denying Swindon who stormed into the semis where they faced arch rivals Cirencester today (Saturday).

**Team:** Stringer, Taylor, Futchter, Cope, Hodson, Simpkins, MacDiarmid, O'Connell, Tuck, Meechan. **Subs:** Mills, Penning, McSherry.

## **SHOWING OFF THEIR SILVERWARE**



**The Swindon Town Youth Team squad and coaches who finished runners-up in the Kastel Cup in Belgium**



# centre of excellence

with Phil Cannon

*It's all gone a bit quiet on the footballing front with no games for the youngsters last weekend.*

*However there are plenty of matches coming up over the next few days and I will fill you in on how we have done in my last set of programme notes in a couple of weeks time.*

I thought this would be a good opportunity to say that we are still looking for sponsors to help finance the two tours which we will be going on during the close season.

The Under 11's, Under 12's and Under 13's are all travelling to

Torbay for a tournament known as the Totnes Cup.

Meanwhile the Under 14's are going over to Ireland to take part in the prestigious Irish Milk Cup.

Obviously going on these trips costs us a lot of money and although the boys themselves have done some fund raising to help boost the coffers, we could still do with some more support.

Saying that we have been fortunate enough to be given a financial boost by several major companies and one of those we would like to welcome today.

Telstra will be presenting the Centre of Excellence with a cheque for £500 before today's game and on behalf of the Club I would like to say a massive



thank you to them.

Nationwide and Castrol have also chipped in to give us a cash boost so once again - a big thank you to them for their support.

Enjoy the game and I look forward to speaking to you soon.

**SWINDON TOWN**  
**Centre of Excellence**

**Spot the stars of tomorrow!**  
Swindon Town Football Club and National Power working in partnership to search for the stars of tomorrow

In partnership with

**National Power**



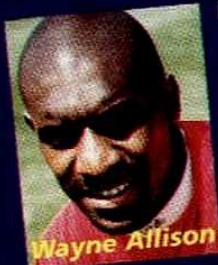
# reserves roundup

with Ross MacLaren



**Avon Insurance  
Combination League  
West Ham Utd Reserves 1  
Swindon Town Reserves 3**

The Chief Wayne Allison celebrated his return from suspension with two goals as the Reserves continued their impressive run which has seen them win four games on the trot.



Wayne Allison

This was a game we were expected to win against a West Ham side full of youngsters but we started poorly on a difficult surface at Dagenham and Redbridge and fell a goal behind after just 10 minutes when we were caught out by a long ball over the top.

We struggled to come to terms with the conditions and it wasn't until just before the half time break that we finally managed to get back on terms when Michael Pattimore made an important block and the ball fell to Wayne Allison who turned and fired into the corner in typical style.

The second half saw us take control and in the 51st minute a corner was taken short and Alex Smith's whipped cross was glanced into the top corner by the Chief to make it 2-1.

I was 3-1 mid-way through the second half when Kevin Watson fed Steve Finney down the left and he cut in before hammering a shot inside the near post.

We looked comfortable throughout the remainder of the game as we kept the ball well and gave West Ham very little hope of a recovery.

There were one or two half chances before the end but I was pleased with the result which kept our improved run going.



Steve Finney

It was good to see Gary Elkins come through the 90 minutes after his recent back complaint and of course it was great to have the Chief back following his three match ban.

**Team:** Talia, Pattimore, Drysdale, Holcroft, Wheeldon, Elkins, Watson, O'Sullivan, Finney, Allison, Smith. **Subs:** Coupe, Finlayson, W.Thorne.



## Fixtures 96/97

**Avon Insurance  
Combination Div 1**

Mon Aug 26	Swansea City	(LC)	A 2-1
THUR SEP 19	TOTTENHAM		H 1-3
Wed Sep 25	Charlton Athletic		A 4-1
MON OCT 07	LUTON TOWN		H 1-0
MON OCT 21	PORTSMOUTH		H 2-0
Thur Oct 31	Bristol City		A 2-3
Wed Nov 06	Oxford United		A 3-3
MON NOV 11	CRYSTAL PALACE		H 3-0
WED NOV 20	BRISTOL ROVERS (LC)		H 0-0
MON DEC 09	BRISTOL ROVERS		H 1-3
Mon Dec 16	Cardiff City		A 1-1
Wed Jan 15	Brighton & H.A.		A 0-1
MON JAN 20	ARSENAL		H 2-6
Mon Jan 27	Oxford United (LC)		A 1-2
Mon Feb 03	AFC Bournemouth		A 2-2
MON FEB 10	SOUTHAMPTON		H 2-2
WED MAR 05	BRISTOL CITY (LC)		H 2-1
WED MAR 12	NORWICH CITY		H 0-1
Mon Mar 17	Chelsea		A 2-1
WED MAR 19	CARDIFF CITY (LC)		H 1-0
MON MAR 24	MILLWALL		H 1-0
Tue Apr 08	West Ham United		A 3-1
MON APR 14	Q.P.R.		H 2-00
MON APR 21	IPSWICH TOWN		H 2-00
Wed Apr 23	Wimbledon		A 2-00
Wed Apr 30	Swansea City		A 2-00
TBA	Watford		A 7-30

All home fixtures are to be played at The County Ground and will kick-off at the time indicated above.

Kick-Off times are subject to change without prior warning.

## Avon Insurance Combination Div 1 at 3rd April 1997

	P	W	D	L	F	A	Pts	GD
Portsmouth	19	13	1	5	36	21	40	+15
Ipswich Town	17	11	4	2	37	10	37	+27
Wimbledon	17	10	5	2	35	21	35	+14
Tottenham H.	18	9	4	5	40	24	31	+16
Chelsea	17	8	3	6	27	26	27	+01
Arsenal	18	7	5	6	39	25	26	+14
Brighton & H.A.	17	6	7	4	30	29	25	+01
SWINDON TOWN	17	7	4	6	30	28	25	+02
Q.P.R.	16	7	3	6	29	26	24	+04
Bristol City	18	6	4	8	36	30	22	+05
Oxford United	18	6	4	8	36	30	22	+06
Luton Town	15	6	2	7	17	19	20	-02
Millwall	16	6	2	8	24	29	20	-05
AFC Bournemouth	17	6	2	9	31	39	20	-08
Swansea City	16	6	2	8	19	29	20	-10
Bristol Rovers	18	5	4	9	18	33	19	-15
Southampton	16	5	3	8	25	31	18	-06
Watford	15	5	3	7	19	26	18	-07
Chalton Athletic	15	5	3	7	17	20	18	-09
West Ham United	18	5	3	10	22	33	18	-11
Cardiff City	16	4	5	7	14	28	17	-14
Norwich City	17	3	4	10	24	38	13	-14

## NEXT FIXTURE...

Swindon Town Reserves' next fixture is here at the County Ground on Monday when they entertain Queens Park Rangers in the Avon Insurance Combination League. The game kicks off at 2pm.

The following Monday, April 21st, the Reserves are again in action on home territory when Ipswich Town are the visitors (2pm)





**Phil  
King**

KIT SPONSOR



MAIN SPONSOR







# tony home's view from a far

Sponsored by



Swindon being Swindon, everybody

knows everybody else's business.

There must be so many people in the crowd today who know Melinda, who went to school with her, who live near her or who have her phone number. It is not for me, you understand but my good friend Sandy Martin from Classic Gold would like a signed photo and an interview! If anyone is reading this and can help us out, give Sandy a call on 01793 440300.

My mind is working overtime now - as you would expect - would it not be a nice idea to get Mel to round off our dull season at the County Ground by introducing the two teams for the final game of the season.

That would put a few smiles on

a few faces and ensure a bumper crowd, don't you think? I will leave

that titillating prospect in the hands of the powers that be!

It looks as though next season I will fulfil a lifetimes ambition and become a season ticket-holder at Anfield.

I have been a Liverpool fan for about twenty years so it is good news - work commitments mean I will be moving that way. But, can you believe that Liverpool lost at home to Coventry? Of all the certain three points in the world and right after Manchester United do the unthinkable and lose to Derby County. What is going on?

You can not predict anything apart from Bolton winning. SKY TV must be getting overexcited at the prospect of another Premiership going to the wire.

***I've just been watching channel 5 (I have always been a loner!) and I have seen Swindon featured twice in a couple of hours.***

Of all the glamour places to go in the world they pick Swindon! Anyway, it turns out that the Oasis Leisure Centre is one of the favourite places to chill out for England's rugby captain Phil de Glanville, has anyone ever seen him there? Secondly Britain's newest tv network decided to do a bit at home with Melinda Messenger and alongside the Magic Roundabout with Melinda Messenger. It is always hard to keep abreast of the traffic there anyway, I started thinking that



...AND  
STAY  
ON THE  
BALL.

Haine & Smith  
OPTICIANS



# the swindon town superstore

County Ground, Swindon



## MORE AMAZING OFFERS AT THE SWINDON TOWN SUPERSTORE

ADULTS HOME &  
AWAY SHIRTS

NOW DOWN TO

**£14.99**

CHILDREN'S HOME &  
AWAY SHIRTS

NOW DOWN TO

**£12.99**

GOALKEEPER'S SHIRTS

ADULTS

**£18.99**

CHILDRENS

**£16.99**

Attention all clubs  
and organisations,  
you can now order  
Avon Trophies from  
the Superstore.

OPENING HOURS:

8.30AM - 5.45PM MONDAY - FRIDAY,  
9AM - 5PM SATURDAYS

To contact the Club Superstore and for  
Mail Order details call **01793 423030**.

MAIN SPONSOR

WE ARE PLEASED TO ACCEPT



# Castrol

The Liquid Engineers



# the swindon town ticket office

county ground, swindon



**TICKETS FOR OUR LAST  
REMAINING HOME GAME THIS  
SEASON ARE NOW ON SALE AT  
THE SWINDON TOWN BOX OFFICE.**



Just to remind you, the  
game still to be played  
here at the County  
Ground:

**CRYSTAL PALACE**  
Saturday April 26th  
(3pm)

## BOX OFFICE CLOSURE

DUE TO ESSENTIAL SYSTEM CHANGES TO  
COPE WITH CREDIT CARD EXPIRY DATES FOR  
THE MILLENIUM AND BRAND NEW  
ENHANCEMENTS TO IMPROVE OUR SEASON  
TICKET ADMINISTRATION, IT IS NECESSARY TO  
CLOSE THE BOX OFFICE FOR ONE DAY, ON  
MONDAY 21ST APRIL.  
OUR APOLOGIES FOR ANY INCONVENIENCE CAUSED

## OPENING HOURS

**Mon - Friday 8.30am - 5.45pm**  
**Late night Wednesday's 6.45pm**  
**SATURDAY'S**  
**9am - 12 noon (non matchdays)**

For further details on ticket availability  
contact the Ticket Office on:

**(01793) 529000**  
To order by fax:  
**(01793) 431887**

WE ARE PLEASED TO ACCEPT



## OUR LAST REMAINING AWAY GAMES:

### OXFORD UNITED



SATURDAY APRIL 19th (away),  
kick-off 3pm. This local derby is  
**ALL TICKET**. There are 420  
seats available at £12 and £8. A  
total of 2,100 terrace places are  
on sale at a cost of £9 and £6.

### HUDDERSFIELD TOWN



SUNDAY MAY 4th (away),  
kick-off 3pm. Fans can pay on  
the day with 1300 seats on  
sale costing £10 and £6.  
Disabled places are on offer  
at £7

CHOOSE FROM NUMBERS 1-42

**Stanley Racing**  
**Golden**  
**Numbers**  
**IRISH**  
**LOTTERY BETTING**

Win  
up to  
**£50,000**

## OUR PRICES BEAT THE LOTTERY!

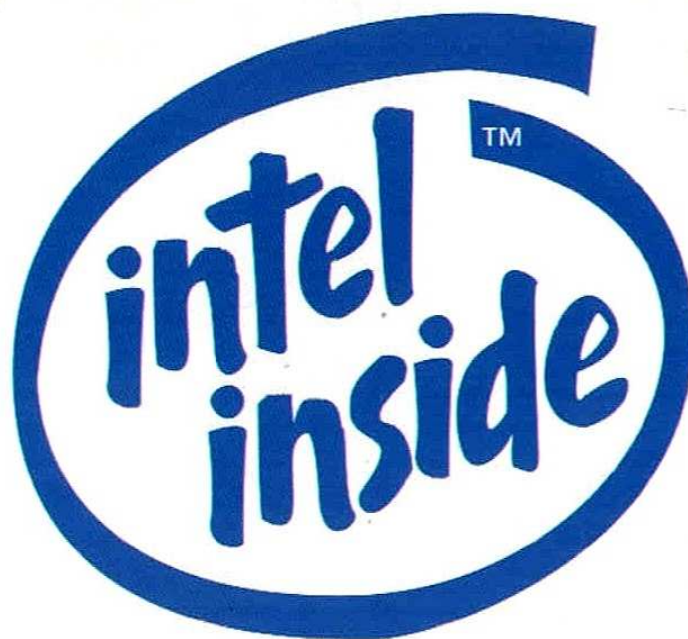
PAYOUT BASED ON £1 STAKE ON THE SIX NUMBER GAME

PICK ANY	OUR RETURNS	THE LOTTERY
1 NUMBER	£6	NIL
2 NUMBERS	£49	NIL
3 NUMBERS	£422	£10
4 NUMBERS	£4096	typically £65
5 NUMBERS	£44371	typically £1250

**Stanley Leisure**

LEADING BOOKMAKERS  
IN U.K. & IRELAND





**pentium**<sup>®</sup>  
P R O C E S S O R

**COWIE FORD** *Swindon*

**1<sup>st</sup>**  
*for*  
**FORD**



**SALES • SERVICE • PARTS**



**Your local Ford  
Main Dealer**



**OVER 3000** GROUP STOCK VEHICLES TO CHOOSE FROM **OPEN 7 DAYS**

**COWIE FORD**

FLEMING WAY ROUNDABOUT,  
SWINDON

**01793 520002**



OPENING TIMES: MONDAY-FRIDAY 8.30am-7pm. SATURDAY 8.30am-5pm. SUNDAY 10am-4pm.

Cars shown for illustration purposes only.



# winning ways

By Dave Hollister

The Nest-Egg half time draw is  
Sponsored by

MECERAFLEX

**Although we struck the  
woodwork three times against  
Southend last Saturday and  
still only secured one point, Liz  
Andre of Chippenham hit the nest  
egg jackpot to win £505!**

This means that the winning amount found its way to Chippenham! Our previous winner from chippenham goes back to the Oxford Utd. Game on 30th August 1995 although nearby Iacock was successful against Manchester City on 2nd November 1996.

There will be a programme fair in the supporters Social Club on Saturday 17th May 1997. There will be thousands of programmes both old and new available including the 1997 FA Cup Final Edition. Full details of this event will be listed in our matchday magazine vs Crystal Palace on 2th April.



Whilst on the subject of programmes, I was browsing through some old ones involving today's opponents before writing these notes.

It was interesting to recall that 19-years old Roy Onslow made his league debut at Portman Road on 8th November 1947.

Morris Jones made his home debut for the Town in the first round of the F.A. Cup three weeks later. This was against Ipswich and he scored twice in a 4-2 victory. Another 4-2 victory against the visitors from Suffolk occurred in 1987. Phil King probably still remembers his goal on that day!

Now for your last chance to win an autographed football this season. Who made his 127th league appearance against Ipswich on 14th October 1989? The first correct entry opened on Friday 18th April will be the winner. Name you favourite player when entering and we will arrange for him to present the ball to you prior to kick-off against Crystal Palace!

## Trust us to help football

The Football Trust is helping the game at all levels - from providing kit for school teams, pitches and changing rooms for grass roots football, safety and improvement work throughout the game right up to providing vital assistance to help League clubs complete the essential task of redeveloping their grounds in line with the Taylor Report.

Over the last 20 years the Trust has received and distributed £250m from Littlewoods, Vernons and Zettors Pools and Littlewoods Spot the Ball competition for the benefit of football.

Up and down the country, clubs are building new grounds and stands, installing seating, and providing safe and comfortable facilities for their spectators to enjoy. Every club depends on the support of the FOOTBALL TRUST and the success of the pools companies. Both are crucial for football's future.



THE FOOTBALL TRUST  
Helping the game



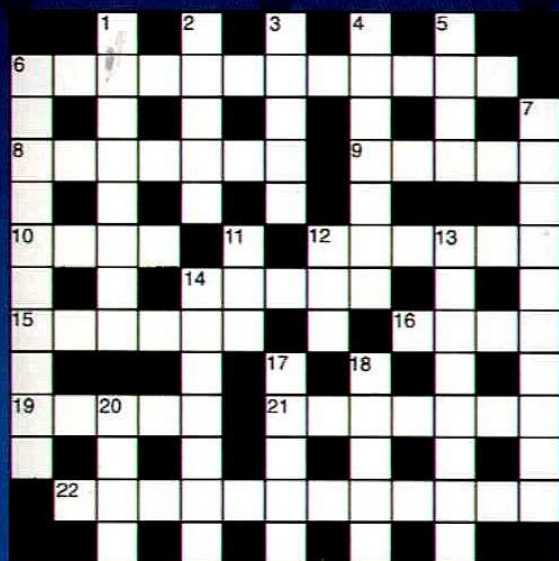
LITTLEWOODS VERNONS ZETTERS  
Making sure football wins  
the Pools each week

THE FOOTBALL TRUST, WALKDEN HOUSE, 10 MELTON STREET, LONDON NW1 2EB



# crossword time...

compiled by Thomas Trickett



## clues across...

6. Once a League section below the third (8)&(4)
8. Queens Park ..... FC (7)
9. Did a Honved side reveal a US state, apparently (5)
10. Eoin Huddersfield Town Boss 1988/92 (4)
12. Chris (1980/90s) England forward (6)
14. Two hat-tricks plus one (5)
15. Method of play, maybe (6)
16. .... rivals such as Celtic & Rangers
19. Viewing a potential player with organ of sight (5)
21. Getting a goal (7)
22. 1990s, Southampton midfielder (4)&(8)

## clues down...

1. Time for football game, not morning though! (8)
2. German lower League side (5)
3. Ex-England star Emlyn Hughes was nicknamed "Crazy...." (5)
4. Continental origin of (1990s) "Dons" stiker Efan Ekoku (7)
5. Football boot sponsor (4)
6. Non-league side in Dorset (10)
7. Mark Robins played for this Danish League side 1990s (10)
11. Scot Gemmill hides a precious stone (3)
12. "..... Jags" nickname of Livingston (Meadowbank Thistle) FC (3)
13. Not the cleanest of sides (8)
14. Brighton & Hove Albion player (nick) (7)
17. Sad as an ('80s) Algerian international (anag) (5)
18. Neil, (1990s) Grimsby Town forward (5)
20. Did Earle the (1990s) "Dons" striker hide a thought (4).

ANSWERS ACROSS...  
 6 DIVISION 4, 8 QUEENS PARK RANGERS, 9 IDAHO, 10 HAND,  
 12 WADDLE, 14 SEVEN, 15 SYSTEM, 16 ARCH, 19 EYING,  
 21 SCORING, 22 NEIL MADDISON.  
 ANSWERS DOWN...  
 1 EVENINGS, 2 ESSEN, 3 HORSE, 4 AFRICAN, 5 PUMA,  
 6 DORCHESTER, 7 COPENHAGEN, 11 GEM, 12 WEE, 13 DIRTIEST,  
 14 SEAGUL, 17 ASAD, 18 WOODS, 20 IDEA.



## face in the crowd

Are you the lucky winner of our 'Face in the Crowd' competition?

In every Matchday Magazine we will be publishing a photograph with a face circled. If you are the winner please call **Louise Kaye in the Marketing Department on (01793) 532121** in person within 14 days of the date of publication to collect your prize!

## WIN A WEEKEND BREAK DURING TODAY'S HALF-TIME BREAK WITH SWINDON TOWN & JARVIS



During the half time break at today's game Swindon Town and Jarvis Hotels will be giving away a superb weekend break free of charge, to someone in the crowd. It will be completely at

random, and you don't have to enter any competition. We're just going to give it away there and then.

The weekend break is for two people for two nights and can be taken at any of Jarvis' 63 fine hotels across the UK.

All you need to do to win a Jarvis weekend break is hold onto your ticket stub until half-time. Straight after the half time scores are announced, we'll call out a seat number, which one of the Swindon Town players will randomly pick for us at half-time.

If it's your seat, come along with your ticket, to the Reception and ask for Louise Kaye and pick up your Free Jarvis Weekend Break voucher. It's as simple as that.

So listen out at the half-time break and you could be going on a superb weekend break with Jarvis Hotels.







*All McLean Homes  
are carefully designed and  
traditionally built.*

McLean Homes South West Limited  
Omicron, Windmill Hill Business Centre,  
Swindon, Wiltshire SN5 6PA.  
Telephone: (01793) 874700.

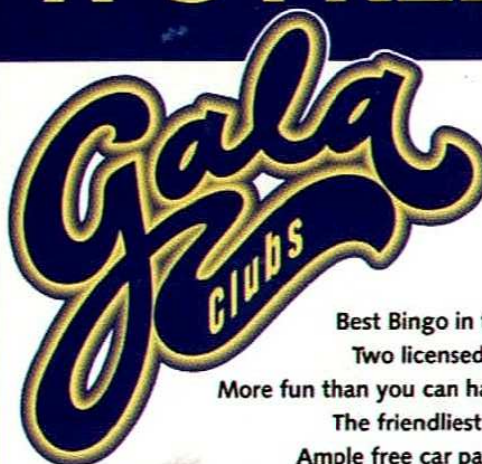
Finance For  
Business?  
Forward Looking  
Forward Thinking



**Forward Trust**

Member HSBC Group

**JOIN NOW  
IT'S FREE**



- Best Bingo in town
- Two licensed bars
- More fun than you can handle
- The friendliest staff
- Ample free car parking

**Gala Membership is absolutely FREE!**  
**So hurry, call for details now on**  
**01793 522555**

Gala Clubs, Greenbridge Retail Park, Swindon

**No.1 FOR BINGO!**

## **CHRISTMAS PARTIES**

**Bring Your Party to  
Our Party!**

*Swindon Town's Party Night  
Packages come gift wrapped to  
guarantee the perfect celebration.*

*They will feature the **Stuart Mac  
Roadshow**, a delicious three course  
**Christmas Menu** and **Competitive  
Bar Prices** with a special extension  
to midnight.*

**Cost: £20.00 per person**  
(inclusive of VAT).

**To make your reservation call the  
Marketing Department on  
Swindon (01793) 532121.**



# marketing news

with Martin Stevens

**A very warm welcome to everyone for this afternoon's game against Ipswich Town.**

## Matchday Sponsors

**We have four joint Match Sponsors for today's game against Ipswich Town, McLean Homes, Forward Trust, Gala Club and West Mode.**

**McLean Homes South West Limited** is a subsidiary of **George Wimpey PLC**, the country's largest house builders. McLean Homes South West have been building homes in the Swindon area since 1963, with its business specialising in detached properties, with a wide variety of floorplans and elevations, the company has established itself as the market leader in this sector. All **McClean Homes** are carefully designed and traditionally built.

At **GALA** everyone's a winner! The new **GALA CLUB** on Greenbridge Retail park is the most exciting entertainment venue in Swindon. Join now and you'll find a warm welcome, friendly company, a range of food and drink and of course, the best bingo around. All at great value for money prices.

**FORWARD TRUST** is an asset financier & service provider dedicated to innovative finance solutions. Divisions fund equipment of all types. In offering flexible, value added products, we aim to change your perceptions of and expectations from a financier. Then we aim to exceed your expectations.

## Matchball Sponsors

**COWIE FORD SWINDON**, the Ford parts plus dealer for this area supply Ford Parts to all body shop and service workshops. In the retail shop you can buy anything for your Ford from a spare bulb to a new engine. If you or your company run a Ford car or van, even if you didn't buy it or have it serviced by them, they can supply parts.

## Presentation Time



**Brown Brothers** were Matchday Sponsors for the game against Southend United. Mike Lancaster is pictured being presented with a signed framed shirt as a memento by

Swindon Town Chairman Mike Spearman.



There were two Man of the Match awards at the Southend game, Swindon's Darren Bullock is pictured being presented with his bottle of champagne by Carl Brown of Brown Brothers, while Southend goalkeeper Simon Royce was also handed a bottle of bubbly by Danny Powell from Brown Brothers.



Joint Matchball Sponsors for the Southend game were Wyvern Staff Agency and Non-Stop Promotions.



Swindon striker Steve Cowe is pictured presenting a signed, framed photo to Jeff Jeffries of Wyvern Staff Agency and Alistair Baldwin from Non-Stop Promotions.

## OUR CORPORATE SUITE SPONSORS





# treatment room

Sponsored by  
**Ridgeway Hospital**

with **Jonathan Trigg**

**Ian Culverhouse** has seen our club specialist this week regarding his right ankle injury.



His problem does not seem to be soft tissue (ie muscle/tendon or ligamentous) but could well be an injury involving the three bones that make up the ankle joint - the tibia, fibula and talus.

He was due to have a scan on Thursday afternoon to verify the diagnosis but we believe he may have a condition known as "impingement exotoses" or footballers ankle in laymans terms.

Ian has had surgery twice previously on this troublesome ankle and until we know the results of the scan, we won't know the extent of the damage or the immediate future treatment necessary.

One thing is certain however - that is Ian will not be involved in the remainder of the season.



Meanwhile skipper Mark Seagraves is taking things a day at a time as he tries to recover from strained muscles in his groin/abdominal region.

On a much brighter note Gary Elkins played 90 minutes for the Reserves against West Ham United during the week and apart from being a little tight and stiff in his lower back region, he came through unscathed.

Mark Walters and Lee Collins continue to improve with Mark now mobilising and working his knee.

Mark is still on his crutches and will be for the next six weeks or so.

He still has a little bit of swelling in his knee but the specialist is very pleased with his progress so far.



## the shadowboard

**These notes are being written ahead of the Open Forum, which is a 'sell out' and which was hopefully a lively evening - highlights next time in the Palace notes!**

Earlier this season we saw Glenn Hoddle taking the Sheffield Wednesday band to Wembley to inspire England. Perhaps he should come back to the County Ground to hear our own drummer pounding out the beat! Even when things are not going brilliantly on the pitch it is great to hear the Intel end doing their best to lift us all - keep up the

good work lads. How about a Swindon band next season?

We are very pleased with the response from fans interested to join the Shadow Board. A short list of applicants will be invited to meet the Shadow Board later this month as part of the selection process. There are still a few days left to apply if you too would like to experience life in the Shadows!!

Finally, good luck at Oxford lads - lets end the season on a high note with a result at the Manor Ground and then the double over Palace!



### Shadow Board

**CHAIRMAN**  
John Lodge

**VICE CHAIRMAN**  
Sheila Maslin

**SECRETARY**  
David Taylor

**MEMBERS**  
Nigel Bennett  
Doug Coombs  
Derrick Hand  
Alan Poole  
Neil Seamark  
Keith Vowles  
David Waldron  
David Wiltshire

**Write to us at the Swindon Town Shadow Board  
at: P.O. Box 663, Swindon SN1 2NX.**



# benno gives his view

By Colin Benson

**The Coca-Cola Final fell flat last Sunday. Even the garnish of Brazilian and Italian masters could not spice things up.**

It was obviously desperately disappointing for Middlesbrough who with three minutes to go had their hands on their first major trophy. Ah well they do get a second chance.

The most impressive performance of the day was delivered by Bryan Robson in the after match press conference. He dealt with all questions in his usually honest and forthright way and put things nicely in perspective when asked if it was a bitter blow to his team's confidence.... He answered: *"It could have been worse. It could have been nil-nil when they scored."*

A reply to add to the fight against relegation and tomorrow's FA Cup semi-final with Chesterfield and Alex Ferguson thinks Manchester United are hard done by... If Boro and Chesterfield need a replay Robbo's team will face five crucial games in eight days. Now that is pressure. But Robbo is not going to ask for more time. I know one popular daily quoted him as saying so but the truth is he dismissed the suggestion without reservation taking the stance that there was no point *"as Alex Ferguson has already had a knock-back."*

The public slanging match between Mr Ferguson and Arsene Wenger over this matter does not enhance the game's reputation I'm sure. The Manchester United boss said in a television interview that the Arsenal manager had criticised United and he felt duty bound to protect his club. Fergie lashed

out at the Frenchman claiming *"He should keep his mouth shut."* He went on to say that Wenger had thrown in his tuppence worth to influence the committee. *"It's typical of someone being driven by self-interest,"* he added.

Of course nobody could ever accuse Fergie of such an indiscretion..... could they?

He then added a cynical attack on Liverpool manager Roy Evans because the Anfield chief expressed an opinion that did not back his own call for an extension to the season.... Really Mr Ferguson you are doing your image no good at all with this childish tit for tat. Perhaps you should heed your own advice and *"Keep your mouth shut."*

## FIFA AT IT AGAIN

Yes the world governing body FIFA are moving the goalposts yet again. It almost seems an abssession now to make annual changes and introduce new regulations and restrictions to the way the game is played.

It is Fraser Digby and his goalkeeper colleagues who are once again the target for the international legislators. As from July 1st 1997 goalkeeper's will no longer be able to handle the ball direct from a throw in.

There is to be a six-second handling restriction also and keepers will be allowed to take only four steps with the ball in their hands.

Under the new laws, which were ratified at a meeting of FIFA's International Football Board in Belfast last month, an indirect free-kick will be awarded against a goalkeeper who handles the ball after receiving it directly from

a throw-in.

I asked Fraser Digby for his considered opinion - his reaction was predictable. Says Fraser: *"I can't see that these changes will speed play up. At the moment there are enough restrictions on us and to say now that we can't pick it up from a throw-in is in my opinion counter productive. Forwards invariably close you down so there are not that many opportunities to pick up anyway. So I can't see this making a lot of difference to the open play."*

*"As regards the six seconds. Is the referee going to stand there with his stop-watch counting off six seconds every time the goalkeeper gets the ball? I find it all a little ludicrous to be honest. Why don't they just leave the game alone. We have had enough restrictions over the last few years."*

I couldn't agree more. To my mind this daft imposition is only going to lead to poorer football because if the goalkeeper has to rush his clearance the quality of the ball will not be so good.

*"That's exactly right,"* says Fraser. *"All the keeper is going to do is look to get it and if he can't throw it immediately he is then going to have to hoof it up the field so, as you say, the quality is not going to be there. If we have to get rid of the ball much quicker and the outfield players aren't looking for the ball and you have not got an option on, all you can do is a quick kick up field and it will totally kill the game.... but still never mind. We have to put up with these things and I retire in a few years, hopefully before they ban us from handling the ball altogether."*



# OUR LINE UP FOR THIS SEASON

*Savour the flavour*



## the **Sporting** year **1960** by Mike Fowler

1. This tricky winger from Lancashire retired after 24 seasons and 76 England Caps. Who is he?

2. Who went to Man City from Huddersfield for a record 50,000?

3. This famous Scottish manager took over his first post at Dunfermline in March 1960. Who was he?

4. Which team in white won the European Cup in a ten goal thriller?

5. Who won the first single handed Trans Atlantic Yacht Race in Gypsy Moth III?

6. Who regained the World Heavyweight Boxing Title from Ingemar Johansson?

7. Which Briton won the 50k walk Gold Medal in the Rome Olympics?

8. West Indies tied a Test Match against which team?

9. This team now in Div 2 won the Football League by one point from Wolves. Who are they?

10. Wolves won the F.A. Cup 3-0, who did they beat at Wembley?

11. Who joined the League for the first time at the 21st attempt and are still in today?

12. Who became the first player to earn £100 per week?

### ANSWERS

1. Tom Finney
2. Denis Law
3. Jock Stein
4. Real Madrid
5. Francis Chichester
6. Floyd Patterson
7. Don Thompson
8. Australia
9. Burnley
10. Blackburn
11. Peterborough
12. Johnny Haynes



# captain's column

with Mark Seagraves

***Last Saturday's result was just what the doctor ordered as we ended a dismal series of results with a battling performance against Southend United.***

It was important to keep a clean sheet which we did and the only real disappointment was that we didn't score even though we created lots of chances and hit the woodwork no fewer than three times.

The lads have regained some of their confidence again now after some bad publicity and on Saturday they showed without a shadow of a doubt that there is still a lot of grit in the team.

This afternoon we face



another difficult test for very different reasons. While

Southend were fighting for their lives, Ipswich are pushing for the play-offs and are desperate for the points today. But if we can show the same sort of attitude as we did last week then we stand every chance of coming out on top.

Ipswich will be having a real go which in turn will make us have a go so it promises to be a great game.

We're all keen to do well and get something from our last four games of the season.

It's important that we put in some good performances because the Gaffer is already

Sponsored by

**BBC**

 WHERE ALL THE SWINDON TOWN ACTION IS

**WILTSHIRE SOUND** 103 - 105FM

looking towards next season and its up to us to impress him every time we go out onto the pitch so as to keep our places when the new season starts.

Before I go a quick word about next week's local derby at Oxford. We all know how important it is to you that we do well against them and having beaten them 1-0 here at the County Ground it would be great to complete the double.

Although both teams are in mid-table with seemingly little to play for - neither side will take much firing up for that one.

On a personal note I've been struggling through injury but I hope to make a return soon.

## **SWINDON TOWN'S** **Highly Commended Matchday Magazine**

**designed, produced and printed by**  
**PIA Advertising & Marketing Ltd.**

- **Design • Advertising • Direct Mail • PR**
- **Exhibitions • Reprographics • Print**



**PIA Advertising & Marketing Ltd.**

The Litten, Newtown Road, Newbury, Berkshire RG14 7BB.

**tel: 01635 35546**



# spotlight on new signing

**Having signed for Swindon until the end of the season, Geordie lad Graham Anthony is keen to impress and earn himself a longer stay here at the County Ground.**

After six years with Sheffield United, the 21 year old was quick to make his move down south in the hope of gaining regular first team football and he is desperate to catch the Gaffer's eye.

*"I wasn't getting a look-in at Sheffield so when Swindon came in for me I jumped at the chance of coming down.*

*"It gets you down playing for the Reserves week in and week out so I'm hoping I can do enough to get a place in the*

*first team at Swindon and earn myself a new contract."* he said.

Graham was first spotted by the Blades at the age of 15 and after signing on as a schoolboy he served his apprenticeship, and was part of the Youth team who reached the semi finals of the FA Youth Cup.

His skills had done enough to earn him a professional contract and although he made a few first team appearances he was unable to get on the team sheet as often as he would have liked and at one stage had a spell on loan at Scarborough.

*"I had very few chances under Dave Bassett but when Howard Kendall came in and gave me a new deal I hoped this would be the start of better things.*

*"But Howard then started to*

*sign his own midfield men including the likes of John Ebbrell from Everton so I was pushed further down the queue and realised I had to get away.*

*"I'm glad Steve has given me an opportunity to show what I can do and I'll be giving it everything I've got to make a career for myself here."* he commented.

Graham made his Swindon debut in difficult circumstances at Oldham Athletic where the team were well beaten in one of their worst displays of the season.

*"It was a hard debut but I know we can do a whole lot better than that.*

*"Despite a difficult time over the Easter period the mood has still been alright and the lads are not totally down and out.*

## SANDY MARTIN IN THE MORNING

PRE-DICTA-SCORE



**PRE-DICTA-SCORE AND WIN  
AN AUTOGRAPHED FOOTBALL**



**IT'S NOT JUST "YOU"  
STEVE McMAHON LISTENS TOO!**



## SWINDON TOWN FOOTBALL CLUB

*Presents the 1997*

**Sporting Club  
Dinners**

ON

**MONDAY 21ST APRIL 1997**

Featuring the notorious  
**TOMMY DOCHERTY** and ever popular,  
**BARRY WILLIAMS.**

AND

**MONDAY 16TH JUNE 1997**

Featuring the colourful, former England  
International **FRANK WORTHINGTON**  
with more humour from **JOHN MARTIN.**

At

**THE MARRIOTT HOTEL Swindon**

Table of 10 will be £325.00 +VAT.  
If you reserve a table for both dinners, the  
cost will be reduced to £600.00 +VAT.

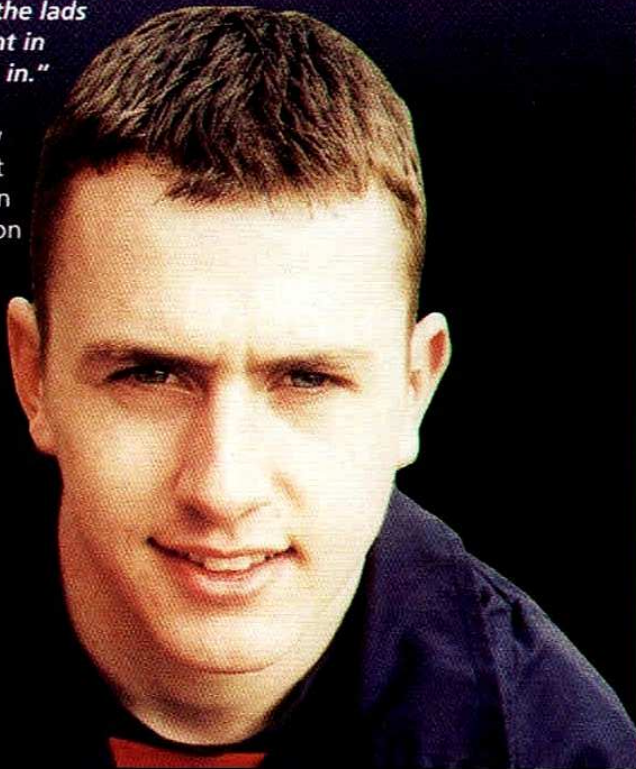
For further information contact  
Tracy Bond on (01793) 532121.



# - Graham Anthony

*"There has still been a good atmosphere and the lads have been brilliant in helping me settle in."*

All Graham now wants to do is get settled in Swindon and concentrate on re-launching his career which was certainly going stale until Steve McMahon handed him a lifeline.



**Name:** Graham Anthony

**Age:** 21

**Birthplace:** South Shields

**Position:** Midfield

**Former Clubs:**

Sheffield United,

**Nickname:** None yet!

**Who did you support as a youngster?**

Newcastle United

**Highlight of career so far:**

Debut for Sheffield

**Favourite other sports:**

Golf

**Most respected player in football:** "Gazza"

**CAMBERLEY AUTO FACTORS LIMITED**



**GET YOUR SPARES WHERE THE TRADE BUY THEIRS**

**TOP OF THE LEAGUE FOR MOTOR SPARES IN SWINDON**

**UNIT 8, LYNTON ROAD, CHENEY MANOR IND. EST. TELEPHONE 01793 532891**

**NON-STOP PROMOTIONS**

*Making your good name look even better*

Telephone today for our current brochure, opening up a world of possibilities for your Promotional Product needs



**Telephone: 01672 563030**

Non-Stop Promotions & Marketing Ltd.,  
Fordbrook Business Centre, Marlborough Road,  
Pewsey, Wiltshire, SN9 5NU.



# 1996/97kit sponsorship



Mark Walters



Wayne Allison



Steve Cowe



Ian Culverhouse



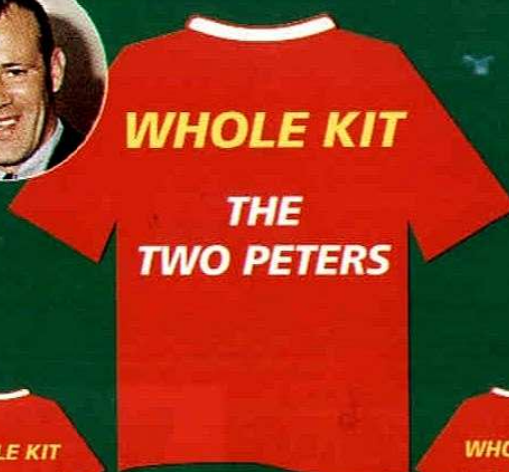
Fraser Digby



Jason Drysdale



## Darren Bullock



Scott Leitch



Ty Gooden



Steve Mildenhall



Steve McMahon



Phil King



Graham Anthony



Steve Finney



Mark Seagraves



Alex Smith



Gary Elkins



Peter Thorne



Wayne O'Sullivan



Mark Robinson



Frank Talia



Mike Walsh



Frederic Darras



Kevin Watson

Sponsor your favourite Swindon Town player's **WHOLE KIT**  
1996/97 season £330.00

1-Shirt £90.00 2-Shorts £60.00 3-Socks £40.00 4-Match Boots £80.00 5-Tracksuit £90.00  
All prices are subject to VAT.



# in & around the **County** ground

Brought to you by

**PHH**

Official car supplier to STFC

## **Coleview Girls** given a lift

**Coleview Girls Football Club were given a boost by Swindon Town's Community Office when they donated an Umbro kit bag.**



Pictured with Swindon Town's Community Officer Clive Maguire are Marie Foster (right) aged 13 who plays for the Under 14's and Laura Foster who is 11 and plays for the Under 12's.

The Club are desperate to find a main sponsor to help them pay for new kit and anyone interested in giving some financial backing should contact John Foster on 01793 522879 for further details.

## **Praise** from the FA

**The Football Association were delighted with the way Swindon Town handled the recent Under 21 international between England and Switzerland.**

Below is an extract of the praise given from Lancaster Gate in a letter to Chief Executive Steve Jones:

*Just a short note to thank you and all your staff for your assistance in connection with the Under 21 International match staged at the County Ground.*

*We were delighted with all the efforts made by your Club. All arrangements were excellent and we were particularly pleased with the attendance.*

*I would also like to congratulate you on the professionalism and friendliness of all your staff. They were a credit to Swindon Town Football Club.*

## **Rituals** and superstitions!

**Chris Atkinson and Stuart Edge are compiling a book on football supporters' rituals and superstitions. We would like to hear your stories.**

Why they started? How successful they were? And ones relating to specific matches.

Please write, stating your team to:

**LambStu enterprises, PO Box 3772, Great Bardfield, Braintree, Essex, CM7 4RD.**

## **Daniel** meets his hero

**Pictured is ardent Town supporter Daniel Brierley receiving a signed, framed team photograph from Scott Leitch who skippered the team in last week's match against Southend United.**



Daniel, who was recently a Matchday Mascot at the County Ground is a big fan of Scott Leitch, so much so that he has even got Leitch written on the back of his Town shirt.

So he was all smiles when Scott strolled over to hand Daniel a gift and pose for a picture.

Mickey and Minnie Mouse were recently guests of the Club as they popped in to say hello to some of our younger fans, meet the Rockin Robin and at the same time pick up a signed shirt to help raise money for charity.



The Disney stars have been dropping in on all of the club's in the country to help raise cash for the Brittle Bone Society and they didn't leave the County Ground empty handed with the signed shirt being taken with them to boost the coffers.

Mickey and Minnie are pictured with our very own Rockin Robin.



# swindon town ladies



by Roger Reeves

**Within the next few years Women's football is being reorganised so it was essential that the Town retained their First Division status in the Southern Region League.**

At Present there is a National Premier league (Arsenal and Doncaster Belles play in that League) and a Division One North and a Division One South.

The rest of the country is split into ten Regional Leagues. The Town play in the Southern Region league that stretches from Bedfordshire and Buckinghamshire, the edge of London and down to the South Coast.

The winners of the Southern Regional League go into a play-off competition with the other Regional winners in the Southern half of the country and the winners then go into the National League Division One South.

The same thing happens in the North of England. It is proposed that next season the Regional League Division One is increased to twelve teams and the other three Division are merged and new area Divisions formed.

The following season, four new Combination Leagues will be formed. One in the North, one in the Midlands and one each in the South East and South West.

The Southern Region Division One teams will be merged with the South West Region League teams to form the new Combination League - South West.

Next season it will be important that the Town do well so that they can be part of this new set up but there is still a lot of talking and planning to do before these proposals can be formalised.

Eight of the Town's youngsters, Adelle Taylor, Sarah Richardson, Clare White, Zoe Gleeves, Hayley Johns, Susan Shaw, Hannah Povey and Leanne Taylor were part of the County Under Sixteen party that took part in a Four Counties Tournament in Dorset.

Wiltshire finished third and each of the Town's girls gave a good account of themselves.

Town Players have also been part of the Wiltshire Womens Senior team that has won

through to the final of the South Western Counties Championship.

The Final, against Sussex, will be played on Melksham Town's ground on Sunday 20th April and kick off at 2-00pm.



**Tracy Mackeddle, who is coaching for the Major Soccer league in the United States during the summer.**

## Fixtures 96/97 Southern Region League Division 1

Sun 8th Sept	Portsmouth	A	1-3
Sun 15th Sept	Havant Town	A	4-2
Sun 22nd Sept	Swindon Spitfires	A	2-3
Sun 29th Sept	Cinderford T. (FAC 1)	A	10-0
SUN 6TH OCT	BINFELD	H	4-1
SUN 13TH OCT	RINGWOOD	H	4-2
Sun 20th Oct	Southampton	A	0-7
Sun 27th Oct	Havant Town LC1	A	2-0
Sun 3rd Nov	Reading Royals (FAC 2)	A	0-5
Sun 10th Nov	Cheltenham	A	2-2
Sun 17th Nov	Reading Royals	A	Post
SUN 24TH NOV	SOUTHAMPTON STS.	H	1-2
SUN 1ST DEC	PORTSMOUTH	H	4-4
SUN 8TH DEC	HAVANT TOWN	H	1-2
SUN 15TH DEC	CARTERTON TOWN (LC2)	H	8-1
SUN 22ND DEC	SWINDON SPITFIRES	H	2-6
Sun 5th Jan	Regional Five-A-Side		
Sun 19th Jan	Ringwood	A	5-1
Sun 26th Jan	Reading Royals (LC 3)	A	2-4
SUN 2ND FEB	SOUTHAMPTON	H	3-1
Sun 9th Feb	Southampton Saints	A	2-3
Sun 16th Feb	Cheltenham	A	3-4
SUN 23RD FEB	READING ROYALS	H	3-8
Sun 9th Mar	Binfield	A	5-1
Sun 16th Mar	Reading Royals	A	0-5

## League Table 96/97 season Southern Region League Division 1

	P	W	D	L	F	A	Pts
Reading Royals	15	14	0	1	70	16	42
Southampton Saints	17	11	1	5	35	26	34
Portsmouth	17	9	6	2	35	19	33
Cheltenham	18	8	6	4	36	38	30
Southampton	16	9	2	5	57	27	29
Swindon Spitfires	17	7	2	8	36	40	23
SWINDON TOWN	18	6	2	10	46	57	20
Binfield	18	6	1	11	22	42	19
Havant Town	17	2	4	11	15	36	10
Ringwood	18	0	3	15	14	66	3

## Player Appearances 96/97 season

	APPS	GOALS
Sharon Black	22(1)	3
Sil Cryer	2(10)	1
Donna Fraser	1	1
Kerie Garwood	23	9
Justine Hume	15(2)	3
Pam Laker	12	6
Nadine Lloyd	23	19
Tracy Mackeddle	18(4)	6
Deb Martin	11(3)	3
Vikki McCann	12(3)	-
Sara Privett	7(7)	1
Kim Reeves	23	5
Alison Richards	5	-
Sarah Richardson	(1)	-
Jo Sharpe	17(3)	-
Adelle Taylor	7(2)	-
Leanne Taylor	5(3)	6
Clare Tyson	23	-
Clare White	7	3
Netti Wyness	20	-
Own Goals		2
() Denotes used sub.		



# football shorts

by M.J. Evans

## HOME QUALIFICATION

England qualified for the 1950 World Cup by virtue of being champions of the Home International Championships. Scotland, who finished second were also eligible for entry but refused to go on the grounds that if they were not British Champions they would not be World Champions. England regretted their venture also going out 1-0 to the United States of America. This defeat is still one of the biggest shocks ever in World Cup history.

## FRIENDLY FINAL

In 1889 Celtic reached their first ever Scottish FA Cup final which was also at their first attempt. Third Lanark were their opponents but on the day of the final the ground was covered with a blanket of snow

and whilst it was not considered appropriate to play a final upon both sides agreed to play a friendly instead. One week later the sides met for real with Third Lanark winning 2-1.

## WHITE HART INN

Tottenham first played their fixtures on Tottenham Marshes before moving in 1888 to Northumberland Park. Their next home was an old disused nursery with old sheds and greenhouses on the site owned by local brewers Charrington. The nearest public house was also owned by the brewery and was called the White Hart Inn. After one successful season playing there the club purchased the freehold from the brewery and thus began what is now known as White Hart Lane to this day.

## RANGERS ENGLISH SEMI

Glasgow Rangers after withdrawing their first entry for the English FA Cup in 1885/86 entered the following year whereupon they faced Everton in Round One. Winning 1-0 they eased their way to the semi-finals where they lost 2-1 to Aston Villa in a fixture played at Crewe Alexandra.

## EXTRA TIME AT A LATER DATE

On November 26, 1898 at Owlerton, The Wednesday's match with Aston Villa was abandoned after 79 minutes due to bad light with the Wednesday leading 3-1. The League insisted upon the clubs meeting once more, but only to fulfil the remaining 11 minutes, which they did on March 13, 1899.



**WYVERN STAFF**

**WYVERN STAFF AGENCY**

24 Commercial Road, Swindon

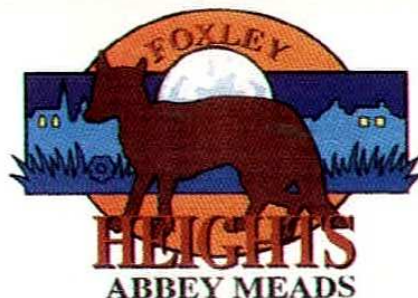
Telephone (01793) 513363

**ALWAYS required:**  
**Industrial Warehouse Staff**

Rates of pay from  
£4.00 to £8.40 per hour

**Immediate Start**

**CALL NOW!**



**NOW OPEN...**

OUR SUPERB DEVELOPMENT OF TWO,  
THREE AND FOUR BEDROOM HOMES

**SELLING NOW!**

**FOXLEY HEIGHTS**

ST. ANDREW'S RIDGE, NORTH SWINDON

FOR FURTHER DETAILS CONTACT OUR

SALES COMPLEX ON (01793) 700912

OPEN DAILY 10am - 5.15pm

**BLOOR HOMES**

BUILDING FOR THE FUTURE





# Club Call



**The official voice of Swindon Town**

**For all the  
latest news,  
views and  
interviews**



**Updated daily  
- get all the  
stories as  
they happen**

**0891 12 16 40**

calls are charged at 50p per minute at all times



**Caught.**  
Ball watching!

The official ball supplier to:



Reproduced by Sportbox Ltd. 0891 121640



# on the road...



**Oxford United**  
**Saturday April 19th**  
**Kick-Off 3.00pm**

## Did YOU know?

*Town's last visit to the Manor Ground in April - back in 1982 - saw the debut of full-back Colin Bailie, just 18 a week earlier. Swindon were crushed 5-0.*



## Going to Huddersfield?

**TRAVEL CLUB**

**Fare £12.00**

**Depart County Ground: 7.30am**

**SAS TRAVEL**

**Fare £12.00**

**Depart County Ground: 7.45am**

## TRAVEL CLUB

**OXFORD**

**Fare £5.00**

**Depart County Ground: 12.30pm**

Bookings taken at the Travel Club Office in the Castrol Stand before and after all home games and Tuesday to Thursday evenings from 7.00 - 9.00pm, or at the Information Centre in Regent Street. Pick-up points are available - please enquire when booking.

You can also book by telephone at Barnes Coaches on the number below.

A £2 reduction is available for all children accompanied by an adult.

**For Bookings Telephone:**  
**(01793) 611499 or (01672) 540330**

## Travelling by Road.....

Take the A420, joining the A34 Ring Road at Botley. Leave the A34 at Pear Tree roundabout, taking the A44 to the next roundabout, then back on to the Ring Road (signposted A40 London). Leave by the slip road marked New Marston 'weakened bridge' and into Marsh Lane. At the end, turn left at the mini-roundabout into Headley Way. Parking is available in side streets. Continue up the hill and turn left into Woodlands Road. Visitors turnstiles are at the end, in Cuckoo Lane.

## or by Rail.....

There is no direct train service to Oxford, a change at Didcot Parkway being necessary. From Oxford station, take short walk to the City Centre, then travel by bus - service 20 - journey time approx. 15 mins.



**S.A.S TRAVEL**



**OXFORD Fare £5.00**

**Depart COUNTY GROUND (Superstore) 12.30pm**

**Also picking up at: WOOTTON BASSETT 12.00pm**

**WEST SWINDON 12.15pm ERMIN STREET 12.45pm**

- Executive coach travel with hostess service of hot/cold drinks and light refreshments
- All coaches are NON SMOKING
- Reductions for accompanied under 15's
- No membership fee

**COUNTY GROUND BOOKING OFFICE**  
**(Old Matchday Ticket Office)**

**Open: Tuesdays, Wednesdays, Thursdays 10am - 2pm**  
**Thursdays 7pm - 9pm**

**MATCHDAYS:**

**1.30pm - 2.45pm (Sats) 6.30pm 7.30pm (Weds)**

**Tel: (01793) 536757**

**24-HOUR TRAVEL and TICKET INFORMATION SERVICE**  
**Tel: (01793) 825935 Fax: (01793) 821015**

WE ARE NOW PLEASED TO ACCEPT





# statistics 1996/97 season



1

## NATIONWIDE LEAGUE DIVISION 1

up to and including April 8th

	P	W	D	L	W	D	L	F	A	PTS.
BOLTON WANDERERS	41	16	4	1	9	8	3	88	49	87
BARNLEY	40	11	4	5	8	9	3	64	45	70
WOLVES	41	9	4	7	11	5	5	60	45	69
SHEFFIELD UNITED	42	11	5	5	7	6	8	70	51	65
PORT VALE	42	8	9	4	8	6	7	53	48	63
PORTSMOUTH	41	11	4	5	7	4	10	52	45	62
IPSWICH TOWN	41	11	6	3	5	7	9	59	49	61
CRYSTAL PALACE	39	8	5	6	8	7	5	69	40	60
NORWICH CITY	42	8	9	4	8	2	11	61	63	59
TRANMERE ROVERS	41	10	7	4	6	4	10	57	50	59
STOKE CITY	41	13	3	5	3	7	10	47	51	58
QUEENS PARK RANGERS	42	8	5	8	7	7	7	56	57	57
BIRMINGHAM CITY	41	9	6	5	5	7	9	46	47	55
SWINDON TOWN	42	11	6	4	4	2	15	52	63	53
CHARLTON ATHLETIC	40	9	7	4	5	3	12	47	55	52
OXFORD UNITED	42	12	3	6	2	6	13	57	61	51
READING	41	11	7	3	2	5	13	50	58	51
MANCHESTER CITY	39	10	4	5	4	5	11	49	50	51
WEST BROMWICH ALBION	41	5	7	8	7	7	7	63	67	50
HUDDERSFIELD TOWN	41	10	5	6	2	8	10	45	57	49
BRADFORD CITY	41	8	5	7	2	6	13	42	67	41
GRIMSBY TOWN	40	5	7	9	4	5	10	52	72	39
OLDHAM ATHLETIC	41	5	7	9	4	5	11	48	59	39
SOUTHEND UNITED	42	7	8	6	1	6	14	39	75	38



## First Team Player Appearances 96/97

Player Name:	League		Cup		Total	
	Apps.	Gl.	Apps.	Gl.	Apps.	Gl.
PAUL ALLEN	5(3)	1	2	0	7(3)	1
WAYNE ALLISON	35(2)	11	5	2	39(2)	13
GRAHAM ANTHONY	2	0	-	-	2	0
MARLON BROOMES	12	1	-	-	12	1
DARREN BULLOCK	9	1	-	-	9	1
LEE COLLINS	3(1)	0	1	-	4(1)	0
GRAHAM COUGHLAN	2	0	-	-	2	0
STEVE COWE	27(7)	7	4(1)	0	31(8)	7
IAN CULVERHOUSE	31	0	5	0	36	0
FREDERIC DARRAS	27(4)	0	4	0	31(4)	0
FRASER DIGBY	27	0	1	-	28	0
JASON DRYSDALE	10(1)	0	2(1)	0	12(2)	0
GARY ELKINS	17(4)	1	3	0	20(4)	1
STEVE FINNEY	8(1)	2	1(1)	0	9(2)	2
TY GOODEN	4(6)	1	0	0	4(6)	1
PETER HOLCROFT	1(1)	0	-	-	1(1)	0
KEVIN HORLOCK	28	8	6	0	34	8
ROBIN HULBERT	0	0	1(1)	0	1(1)	0
DAVID KERSLAKE	8	0	-	-	8	0
PHIL KING	3	0	-	-	3	0
SCOTT LEITCH	33	0	6	1	39	1
STEVE McMAHON	2(1)	-	-	-	2(1)	0
STEVE MILDENHALL	1(1)	-	-	-	1(1)	0
WAYNE O'SULLIVAN	15(9)	0	2(1)	1	17(10)	1
MICHAEL PATTIMORE	1(1)	-	-	-	1(1)	-
MARK ROBINSON	39	1	5	0	44	1
MARK SEAGRAVES	28(1)	0	4(1)	0	32(2)	0
ALEX SMITH	10(5)	1	0	0	10(5)	1
FRANK TALIA	15	0	5	0	20	0
SHAUN TAYLOR	2	0	1(1)	0	3(1)	0
PETER THORNE	20(8)	8	2(1)	2	22(9)	10
MARK WALTERS	24(3)	7	5	1	29(3)	8
KEVIN WATSON	16(8)	1	1(2)	0	17(10)	1

## Swindon Town Fixtures 1996/97 Season

Date	Opponents	Res	Att.
Sat Aug 17	Norwich City	A 0-2	15,165
TUE AUG 20	WOLVERHAMPTON W. C.C.C 1 (1)	H 2-0	7,451
SAT AUG 24	PORT VALE	H 1-1	8,706
WED AUG 28	OLDHAM ATHLETIC	H 1-0	8,025
Sat Aug 31	Southend United	A 3-1	4,011
Wed Sep 4	Wolverhampton W. C.C.C 1 (2)	A 0-1	10,760
Sat Sep 7	Grimsby Town	A 1-2	4,089
WED SEP 11	PORTSMOUTH	H 0-1	8,687
SAT SEP 14	TRANMERE ROVERS	H 2-1	8,430
WED SEP 18	QUEENS PARK RANGERS C.C.C 2 (1)	H 1-2	7,843
Sat Sep 21	Queens Park Rangers	A 1-1	13,662
Wed Sep 25	Queens Park Rangers C.C.C 2 (2)	A 3-1*	6,976
FRI SEP 27	WOLVERHAMPTON W.	H 1-2	8,572
Wed Oct 2	Bradford City	A 1-2	9,249
SAT OCT 12	OXFORD UNITED	H 1-0	10,811
WED OCT 16	HUDDERSFIELD TOWN	H 6-0	7,724
Sat Oct 19	Crystal Palace	A 2-1	15,088
Wed Oct 23	Manchester United C.C.C 3	A 1-2	49,305
Sat Oct 26	Reading	A 0-2	11,018
WED OCT 30	WEST BROMWICH ALBION	H 2-3	8,909
SAT NOV 2	MANCHESTER CITY	H 2-0	14,374
SAT NOV 16	BARNLEY (F.A. CUP 1)	H 3-0	10,837
Tues Nov 19	Ipswich Town	A 2-3	7,086
Sat Nov 23	Birmingham City	A 0-1	16,559
Tues Nov 26	Sheffield United	A 0-2	12,301
Wed Nov 27	Coca-Cola Cup 4		
SAT NOV 30	READING	H 3-1	10,875
Sat Dec 7	Charlton Athletic (F.A. Cup 2)	A 0-2	10,565
Sat Dec 14	Stoke City	A 0-2	10,102
SUN DEC 22	BOLTON WANDERERS	H 2-2	8,948
Thu Dec 26	Portsmouth	A 1-0	10,605
Sun Jan 5	Everton F.A. Cup 3	A 0-3	20,411
Wed Jan 8	Coca-Cola Cup 5		
Sat Jan 11	Tranmere Rovers	A 1-2	8,763
SAT JAN 18	BRADFORD CITY	H 1-1	7,851
SAT JAN 25	GRIMSBY TOWN	H 3-3	9,127
Wed Jan 29	Wolverhampton Wanderers	A 0-1	23,003
SAT FEB 1	SHEFFIELD UNITED	H 2-1^	8,811
WED FEB 5	QUEENS PARK RANGERS	H 1-1	10,830
Sat Feb 8	West Bromwich Albion	A 2-1	16,219
Wed Feb 19	Coca-Cola Cup SF (1)		
Sat Feb 22	Manchester City	A 0-3	27,262
WED FEB 26	BIRMINGHAM CITY	H 3-1	7,428
SAT MAR 1	CHARLTON ATHLETIC	H 1-0	9,256
Tue Mar 4	Barnsley	A 1-1	8,518
Sat Mar 8	Bolton Wanderers (F.A. Cup 6)	A 0-7	13,981
Wed Mar 12	Coca-Cola Cup SF(2)		
SAT MAR 15	STOKE CITY	H 1-0	8,878
Sat Mar 22	Port Vale	A 0-1	6,142
SAT MAR 29	NORWICH CITY	H 0-3	10,250
Mon Mar 31	Oldham Athletic	A 1-5	5,699
SAT APR 5	SOUTHEND UNITED	H 0-0	6,730
Sun Apr 6	Coca-Cola Cup Final		
SAT APR 12	IPSWICH TOWN (F.A. Cup SF)	H	
Sat Apr 19	Oxford United	A	
SAT APR 26	CRYSTAL PALACE	H	
Sun May 4	Huddersfield Town	A	
Sat May 17	F.A. Cup Final		

**NEXT HOME GAME:**  
**SAT APRIL 26TH**



**Swindon Town vs Crystal Palace**  
**NATIONWIDE LEAGUE DIVISION 1**  
**Kick-Off 3.00pm**



FAC = F.A. Cup C.C.C = Coca-Cola Cup

© The Football League Ltd 1996

\* After Extra Time (4-3 agg)

^ Indicates own goal

All home Saturday fixtures will kick-off at 3.00pm.

Home Sunday and Bank Holiday fixtures will kick-off as advertised.

Home midweek fixtures will kick-off at 7.45pm.

All dates and times of kick-off's are subject to change.



Goalscorer = Name in Red Substitute used = ●▼■

1	2	3	4	5	6	7	8	9	10	11	12	13	14
TALIA	DARRAS	DRYSDALE	LEITCH	ALLEN	TAYLOR▼	ROBINSON	WALTERS	FINNEY●	ALLISON	HORLOCK■	THORNE●	SEAGRAVES▼	WATSON■
TALIA	DARRAS	DRYSDALE	LEITCH	ALLEN▼	TAYLOR	ROBINSON	WALTERS■	FINNEY	ALLISON	HORLOCK	THORNE	SEAGRAVES▼	WATSON■
TALIA	DARRAS	DRYSDALE	LEITCH	ALLEN	TAYLOR	ROBINSON	WALTERS■	FINNEY●	ALLISON	HORLOCK	SEAGRAVES	THORNE●	WATSON■
TALIA	DARRAS	DRYSDALE	LEITCH	SEAGRAVES	CULVERHOUSE	ROBINSON	WATSON	COWE	ALLISON	HORLOCK	THORNE	ALLEN	FINNEY
TALIA	DARRAS	DRYSDALE	LEITCH	SEAGRAVES	CULVERHOUSE	ROBINSON	WATSON	COWE■	THORNE	HORLOCK	O'SULLIVAN●	ALLEN	FINNEY
TALIA	DARRAS	DRYSDALE●	LEITCH	SEAGRAVES	CULVERHOUSE	ROBINSON	WATSON	COWE	THORNE	HORLOCK	TAYLOR●	WALTERS	FINNEY
TALIA	DARRAS	SMITH●	LEITCH	SEAGRAVES	CULVERHOUSE	ROBINSON	WATSON■	COWE	THORNE▼	HORLOCK	ALLEN●	WALTERS■	FINNEY▼
TALIA	DARRAS	ROBINSON▼	LEITCH	SEAGRAVES	CULVERHOUSE	WALTERS	WATSON●	COWE	THORNE	HORLOCK	ALLISON●	SMITH	FINNEY▼
TALIA	DARRAS	O'SULLIVAN	LEITCH	SEAGRAVES	CULVERHOUSE	WALTERS	ALLEN▼	COWE	THORNE●	HORLOCK	ALLISON	WATSON▼	COLLINS
TALIA	DARRAS	O'SULLIVAN	LEITCH	SEAGRAVES	CULVERHOUSE	WALTERS	ALLEN	COWE	ALLISON	HORLOCK	FINNEY	WATSON	ELKINS
TALIA	DARRAS●	ELKINS	LEITCH	SEAGRAVES	CULVERHOUSE	WALTERS	O'SULLIVAN	COWE	ALLISON	HORLOCK	FINNEY	WATSON	ALLEN●
TALIA	ROBINSON	ELKINS	LEITCH●	SEAGRAVES	CULVERHOUSE	WALTERS	O'SULLIVAN	COWE■	ALLISON	HORLOCK	THORNE●▼	HULBERT■	FINNEY▼
TALIA	ROBINSON▼	ELKINS	LEITCH	SEAGRAVES	CULVERHOUSE	WALTERS	O'SULLIVAN●	COWE	ALLISON	HORLOCK	FINNEY	WATSON	THORNE▼
TALIA	ROBINSON■	ELKINS	LEITCH	SEAGRAVES	CULVERHOUSE	WALTERS	O'SULLIVAN▼	COWE	ALLISON	HORLOCK	DARRAS■	WATSON	THORNE▼
TALIA	ROBINSON	ELKINS	LEITCH●	SEAGRAVES	CULVERHOUSE	WALTERS	O'SULLIVAN	COWE■	ALLISON	HORLOCK	THORNE■	DARRAS	WATSON
TALIA	ROBINSON●	ELKINS	LEITCH▼	SEAGRAVES	CULVERHOUSE	WALTERS	DARRAS	THORNE 3	ALLISON■	HORLOCK	ALLEN	COWE	O'SULLIVAN▼
TALIA	ROBINSON	ELKINS	LEITCH●	SEAGRAVES	CULVERHOUSE	WALTERS	DARRAS	THORNE	ALLISON	HORLOCK	ALLEN	COWE	O'SULLIVAN▼
TALIA	ROBINSON	ELKINS	LEITCH	SEAGRAVES	CULVERHOUSE	WALTERS	DARRAS	THORNE●	ALLISON	HORLOCK	WATSON	COWE	O'SULLIVAN●
TALIA	ROBINSON	ELKINS	LEITCH▼	ALLEN■	CULVERHOUSE	WALTERS	DARRAS●	THORNE	ALLISON	HORLOCK	WATSON●	COWE■	O'SULLIVAN▼
TALIA	ROBINSON	ELKINS●	WATSON	ALLEN	CULVERHOUSE■	WALTERS	DARRAS	THORNE	ALLISON	HORLOCK	GOODEN●	COWE■	O'SULLIVAN
DIGBY	ROBINSON	GOODEN	COLLINS	COWE	HORLOCK	O'SULLIVAN	DARRAS	FINNEY	ALLISON 2	LEITCH	CULVERHOUSE	WATSON	SMITH
DIGBY	ROBINSON	GOODEN	LEITCH	SEAGRAVES	HORLOCK	O'SULLIVAN	DARRAS	FINNEY	ALLISON	WALTERS●	COWE	ELKINS	HOLCROFT●
DIGBY	ROBINSON	GOODEN	LEITCH	SEAGRAVES▼	HORLOCK	O'SULLIVAN■	DARRAS	FINNEY●	ALLISON	WALTERS	COWE▼	ELKINS■	THORNE●
DIGBY	KERSLAKE	ELKINS	LEITCH	SEAGRAVES●	HORLOCK	ROBINSON	DARRAS	THORNE	ALLISON	WALTERS■	COWE●	O'SULLIVAN	FINNEY■
DIGBY	KERSLAKE	ELKINS■	LEITCH	ROBINSON	HORLOCK	O'SULLIVAN	WATSON	THORNE●	ALLISON	WALTERS■	FINNEY●	COWE	GOODEN■
DIGBY	O'SULLIVAN●	ELKINS■	LEITCH	ROBINSON	HORLOCK	COWE	WATSON	FINNEY▼	ALLISON	WALTERS	GOODEN▼	SMITH■	ALLEN●
DIGBY	KERSLAKE	ELKINS	O'SULLIVAN▼	ROBINSON	DARRAS●	CULVERHOUSE	WATSON	COWE	ALLISON	WALTERS■	McMAHON■	SMITH▼	COLLINS●
DIGBY	KERSLAKE	HORLOCK	O'SULLIVAN	ROBINSON	DARRAS●	CULVERHOUSE	WATSON	COWE	ALLISON	WALTERS■	ELKINS●	SMITH■	COLLINS
DIGBY	KERSLAKE	ELKINS	WATSON	ROBINSON	LEITCH	CULVERHOUSE	COLLINS	COWE	ALLISON	HORLOCK	DRYSDALE	McMAHON	O'SULLIVAN
DIGBY	ROBINSON	ELKINS	LEITCH	SEAGRAVES	HORLOCK	CULVERHOUSE	COLLINS▼	COWE■	ALLISON	WALTERS●	DRYSDALE●	WATSON■	O'SULLIVAN▼
DIGBY	KERSLAKE	DRYSDALE	LEITCH	SEAGRAVES	ROBINSON●	CULVERHOUSE	WATSON■	COWE	ALLISON	HORLOCK	O'SULLIVAN●	MILDHALL■	McMAHON
DIGBY	KERSLAKE	DRYSDALE	LEITCH	SEAGRAVES●	ROBINSON	CULVERHOUSE▼	McMAHON■	COWE	ALLISON	HORLOCK	WATSON●	O'SULLIVAN■	ELKINS▼
DIGBY	ROBINSON	DRYSDALE	LEITCH	SEAGRAVES	BROOMES	WALTERS	WATSON	COWE	ALLISON	HORLOCK	O'SULLIVAN	SMITH	DARRAS
DIGBY	ROBINSON	DARRAS●	LEITCH	SEAGRAVES	BROOMES	CULVERHOUSE	WATSON■	COWE	ALLISON	HORLOCK	WALTERS●	SMITH■	McMAHON
DIGBY	DARRAS	DRYSDALE	McMAHON●	ELKINS	BROOMES	CULVERHOUSE	SMITH	COWE	ALLISON	WALTERS■	FINNEY	WATSON●	O'SULLIVAN■
DIGBY	ROBINSON	ELKINS●	LEITCH	SEAGRAVES	BROOMES	CULVERHOUSE	SMITH	COWE	ALLISON	WALTERS	FINNEY	DARRAS●	McMAHON
DIGBY	ROBINSON	DARRAS	LEITCH	SEAGRAVES	BROOMES	CULVERHOUSE	SMITH	COWE	ALLISON	WALTERS●	FINNEY	WATSON	O'SULLIVAN●
DIGBY	ROBINSON	DARRAS●	HOLCROFT	SEAGRAVES	BROOMES	CULVERHOUSE	WATSON	O'SULLIVAN	ALLISON	FINNEY■	McMAHON	DRYSDALE●	THORNE■
DIGBY	ROBINSON	DARRAS	LEITCH	SEAGRAVES	BROOMES	CULVERHOUSE	BULLOCK	THORNE■	ALLISON	COWE●	O'SULLIVAN●	FINNEY■	WATSON
DIGBY	ROBINSON	DARRAS●	LEITCH	SEAGRAVES	BROOMES	CULVERHOUSE	BULLOCK	THORNE	ALLISON	COWE■	FINNEY	SMITH●	WALTERS■
DIGBY	ROBINSON	DARRAS	LEITCH	SEAGRAVES	BROOMES	CULVERHOUSE	BULLOCK	THORNE	ALLISON	SMITH	FINNEY	WATSON	COWE
DIGBY	ROBINSON	ELKINS	LEITCH●	O'SULLIVAN	BROOMES	CULVERHOUSE	BULLOCK	THORNE	ALLISON	SMITH	FINNEY	WATSON	COWE●
DIGBY	ROBINSON	DRYSDALE■	BULLOCK	WATSON	BROOMES	CULVERHOUSE	COWE▼	THORNE●	ALLISON	SMITH	FINNEY●	ELKINS■	PATTIMORE▼
DIGBY	ROBINSON●	DRYSDALE	BULLOCK	SEAGRAVES	BROOMES	CULVERHOUSE	WATSON■	THORNE	ALLISON	SMITH	FINNEY●	COWE■	DARRAS
DIGBY	ROBINSON■	KING	BULLOCK	SEAGRAVES	COUGHLAN●	CULVERHOUSE	COWE▼	THORNE	FINNEY	SMITH	DARRAS●	WATSON■	GOODEN▼
DIGBY	ROBINSON	KING■	BULLOCK	SEAGRAVES	DARRAS	CULVERHOUSE●	ANTHONY	THORNE	COWE	SMITH	FINNEY●	GOODEN	COUGHLAN
DIGBY	ROBINSON	KING	LEITCH	COUGHLAN	DARRAS	ANTHONY	BULLOCK	THORNE	COWE●	GOODEN	FINNEY●	SMITH	WATSON

## IMPORTANT NOTICE

Important safety announcements by the Club Management over the public address system will be preceded by a loud signal to catch the attention of spectators.



24 HOUR INFORMATION

0891 12 16 40

FOR ALL THE LATEST FOOTBALL NEWS FROM THE COUNTY GROUND.

0891 14 16 40

FOR TICKET, TRAVEL AND COMPETITION NEWS.

\*CALLS ARE CHARGED 50P PER MINUTE AT ALL TIMES

Front Cover pic:  
Kevin Watson





# team check

Brought to you by

Haine & Smith  
OPTICIANS



## Swindon Town

1	Fraser Digby
2	Mark Robinson
3	Phil King
4	Scott Leitch
5	Graham Coughlan
6	Frederic Darras
7	Graham Anthony
8	Darren Bullock
9	Peter Thorne
10	Wayne Allison
11	Ty Gooden
12	Steve Finney
13	Alex Smith
14	Steve Cowe

### Team Changes


## Ipswich Town

1	Richard Wright
2	Mick Stockwell
3	Mauricio Taricco
4	Steve Sedgley
5	Chris Swailes
6	Geraint Williams
7	Gus Uhlenbeek
8	Tony Vaughan
9	Neil Gregory
10	James Scowcroft
11	Paul Mason
12	
13	
14	

### Team Changes


### Today's Officials:



Referee:  
John Kirkby (Sheffield)



Assisted by:  
L. Baker (Somerset)  
D.J. Hine (Worcester)

Reserve Official:  
M. Pickering



Mitre Matchball  
Sponsors:

**COWIE**  
**FORD**

**power**  
**train**  
PRODUCTS

# THE RED SUCCESS



## POWERTRAIN CAR PARTS- AN AWESOME RANGE

Powertrain Products  
Greenbridge Road  
Swindon, Wiltshire  
SN3 3LB



24 HOUR INFORMATION

0891 12 16 40

FOR ALL THE LATEST FOOTBALL NEWS FROM THE COUNTY GROUND.

0891 14 16 40

FOR TICKET, TRAVEL AND COMPETITION NEWS.

\*CALLS ARE CHARGED 50P PER MINUTE AT ALL TIMES

**NEXT HOME GAME:**  
**SATURDAY APRIL 26TH**



**Swindon Town vs Crystal Palace**  
**NATIONWIDE LEAGUE DIVISION 1**  
**Kick-Off 3.00pm**